

PARISH NEWSLETTER

Issue No 47

www.saughall.gov.uk

November 2010



Seasons Greetings



The Council wishes you the compliments of the season, a very Merry Christmas and a prosperous and peaceful New Year.

Chairman's Message

Welcome to the November edition of your Parish Council's Newsletter which I hope that you will find informative.

It is that time of the year when the Parish Council considers its budget for next year and as we live in uncertain economic times this is going to be a challenging exercise. Over the next three months the Council will be discussing the budget at our monthly meetings and you are welcome to attend and to tell us what you think. This will be the last budget set by the present Council as there are elections for the new Parish Council in May 2011.

From time to time the Council is criticised for what it does. However, if you are not happy with what it is (or is not) doing for the community at large why not come along to our meetings and discuss your concerns or better still why not consider putting yourself forward as a candidate for the next election?

Jenny Young

Brian Kerr

Congratulations to Councillor Brian Kerr OBE who was elected as the new President of the Cheshire Association of Local Councils in October 2010. Brian has served as a member of this Council for 36 years.

Saughall Welcomes PCSO Wendy Leason



Wendy Leason took up her new post as Saughall's PCSO on Monday, 1 November 2010.

Wendy joined the Cheshire Constabulary in June 2007 as a Police Community Support Officer and previously worked in Crewe. She requested a move to Chester to be closer to

home. Wendy is married with two children and likes to spend her free time going for long walks with her dogs, gardening, socialising, camping and spending time with her family.

Wendy has experience of multi-agency working, working with Community Groups and local schools and in problem solving. She is very friendly and approachable so please feel free to come and have a chat with her, when you see her, and raise any matters of concern.

Wendy is really looking forward to working in Saughall and the surrounding areas and to forming some really good relationships with the people of Saughall.

The Council is well aware that the PCSO provides a good visible link between the Police and the local community and that is why it signed a PCSO Service Level Agreement (SLA) with the Cheshire Constabulary for the three-year period, 1 April 2010 to 31 March 2013, at a cost of £11,800 per annum.

This year, Councillor Andrew Storrar, as a Cheshire West and Chester Councillor, provided a grant of £800 from his Ward Councillor allocation towards the cost of the SLA, to help the local area.

The Constabulary has remodelled the way it polices its areas. Community Beat Manager roles have been created and as a result there has been less crimes committed and less anti social behaviour.

Councils Explore All Options to Find Waste Disposal Solution

Cheshire West and Chester and Cheshire East Councils are talking to Viridor in an attempt to find a solution to the problem of future household waste treatment in the county.

The waste management giant had been selected by both Councils as their

provisional preferred bidder to handle the £850m, 25-year contract.

But just as the two authorities were about to finalise a lengthy procurement process, DEFRA announced that it had decided to withdraw its provisional allocation of over £100m worth of support for the scheme.

The project would have solved the problem of the disposal of Cheshire's household waste through this 25 year contract in an environmentally friendly way – avoiding the need for landfill.

Viridor had proposed a mechanical and biological treatment (MBT) plant at the former INEOS chemical works at Griffiths Road, Northwich, which would recover the limited recyclable materials from household waste and use the remainder to produce a solid recoverable fuel. The fuel would be transported by rail from the MBT facility to a purpose built power station under construction in Runcorn which in turn would generate energy for use in the INEOS works.

Localism and “The Big Society”

Localism is about letting local people make their own choices about how their local community should be run and how their services should be delivered.

The Big Society initiative takes power away from politicians and gives it to the people. This flag ship policy idea was a central theme in the Conservative General Election campaign.

So what does a Big Society actually mean in reality? What are its costs because it is certainly not free and are communities equipped and can they really be expected to take a lead in solving problems locally?

Parish Councils are tried, tested and trusted models of grassroots neighbourhood action – real localism in action. How can the Parish Council play a full integral role in making this happen?

Please let the Council have your thoughts on

these matters. Contact any Parish Councillor or the Clerk. All contact details are available in this publication.

Electoral Review of Cheshire West and Chester Council: Final Recommendations

The Local Government Boundary Commission for England has published its final recommendations for ward arrangements in Cheshire West and Chester, increasing the number of Councillors by three to 75 serving 46 wards.

This followed the publication of draft recommendations in November 2009 and months of consultation with local representatives and communities.

The review was designed to enhance electoral equality; community identities; and efficient and convenient local government.

It was recommended that of the Cheshire West and Chester Council wards: 22 should be single member wards; 19 should be two-member wards; and five should be three-member wards.

It has been recommended that Saughall should be a single member ward.

An order was laid before Parliament in October and the recommendations will either be accepted or rejected. If accepted the new electoral arrangements will come into force at the next Borough Council elections in May 2011.

Local Council Elections – Thursday, 5 May 2011



Local Council Elections are due on 5 May 2011 when it is expected that the Parish Council will stand down. A decision is awaited on this (and is expected in November 2010) as it is possible that they may be postponed to accommodate the Referendum on voting reform planned for the same date.

The Council has already had an additional

year in office and should stand down in May after a five year term. It was elected in May 2006 for four years but was given an extension so that its elections could be held on 5 May 2011, the same day as those of the new unitary authority, Cheshire West and Chester Council.

If you are interested in playing an active part in village life, being involved in the management of village facilities and with wider issues such as planning and highway matters then why not stand for election? Come along to a Council meeting and see what is involved. You can download 'All about local councils' – a booklet produced by National Association of Local Councils (NALC) and the Electoral Commission which will provide you with information on the role of local councillors.

Eligibility to Stand in Parish Council Elections

To stand for election to a Parish Council, you must:

- be a UK or Commonwealth citizen, or;
- be a citizen of the Republic of Ireland, or;
- be a citizen of another Member state of the European Union;
- be at least 18 years old.

To be eligible to stand for an election for a particular Parish, you must:

- be an elector of the Parish, or;
- for the whole of the previous 12 months have occupied (as owner or tenant) land or other premises in the Parish, or;
- during the previous 12 months have worked in the Parish (as your principal or only place of work), or;
- for the whole of the previous 12 months lived in the Parish or within three miles of the Parish boundary

You may, of course, qualify under more than one of the above categories.

You may stand for election as the representative of a political party, or as an independent councillor.

You cannot be a candidate if:

- You are employed by the Parish Council or hold a paid office under the Council (including employment by any joint boards or committees of the Council).
- you are the subject of a bankruptcy restriction order or interim order.
- you have, within five years before the day of the election, been convicted in the United Kingdom of any offence and have had a prison sentence (whether suspended or not) for a period of over three months without the option of a fine.
- you have been disqualified under Part III of the Representation of the People Act 1983 (which relates to donations and other offences) or under the Audit Commission Act 1998.

It does not cost anything to stand for election to the Parish Council.

Nomination forms will be available on the Cheshire West and Chester Council Website www.cheshirewestandchester.gov.uk nearer the time or from the Election Officer on Tel: 01244 402142 or from the Clerk.



Cheshire West and Chester Council's Spending Cuts Pledge

Cheshire West and Chester Council believe that it could be December 2010 before it is able to assess the full impact of Government cuts on the borough.

Then, it is expected that details of central grants to each local authority will be made known through the Government's Formula Spending announcement.

The principal authority expects that its robust programme of efficiencies will help mitigate the effects of the Comprehensive Spending Review (CSR) which announced an average

7.1% overall reduction to Local Government. Since its inception in April 2009, Cheshire West and Chester Council has shed 1,100 jobs, saved £43m and re-invested £8m in front-line services. Reserves are deliberately high at £19.5m; and it has already budgeted for a 10% reduction and contingency plans are in place to deal with varied levels of funding loss. Its Chief Executive, Steve Robinson has stated that:

"Whilst 7.1% a year is an average figure and may not apply to West Cheshire, we believe that actions already taken could help us mitigate the CSR recommendations – but we will certainly not be unaffected.

When the results of the Formula Spending announcement are known – probably during the first week in December – we will go away and carefully study the fine detail before making any decisions.

There will be no knee-jerk reaction.

Dependent, of course, on the level of cuts we have to make, the Council will do everything possible to protect jobs and front - line services that matter to people."

Local Councils to be exempt from Council Tax Freeze

In October, the Secretary of State Eric Pickles announced details of the proposed Council Tax freeze in 2011/12. While he has asked Local Councils to use restraint they have been specifically excluded from the scheme leaving their independent precepting powers intact. This development arises following discussions with the Department for Communities and Local Government by representatives from the National Association of Local Councils.



Modern Payment Arrangements at Last!

The Local Government Minister, Grant Shapps, has unveiled plans to free Parish Councils from archaic rules which prevent them from using modern banking methods

and making fast and easy payments to the small businesses they employ.

Parish Councils spend over £340million each year. But under laws introduced in 1894, even the smallest payments must be signed off by two Members of the Council - creating a time-consuming process and leading them to use cheques instead of quick electronic transfers. In contrast, the Payments Council reports that cheque usage fell by £21.5billion in the last year alone.

So the Minister has confirmed that from 2011, Parish Councils will be given the freedom to use modern banking methods - in time for the abolition of cheques in eight years' time. These changes are set to benefit the many private individuals and companies that Parish Councils employ, as they should now receive payments quickly.



Census on Sunday, 27 March 2011

Government and local authorities depend on census information to help make sure you get the services you need in your community. And that means asking questions of a lot of people. It is vital that we all take part in helping tomorrow take shape. This is your chance to make a difference.

What is the census?

A census is a count of the population. There has been one in the UK every ten years to find out more about who we are as a nation. Everyone is asked for information about themselves to help census users decide how best to plan, fund and deliver the everyday services we all need – like housing, education, healthcare and transport.

The census in England and Wales is run by the Office for National Statistics (ONS).

The census will be carried out on Sunday, 27 March 2011 and for the first time you will be able to complete it online. A paper

questionnaire will be posted to you containing a code to enable you to complete online. Or it can be filled in by hand and posted back.

Why do we need a census?

A lot has changed over the last ten years.

How many more people live in England and Wales compared with ten years ago? What kind of people are they? And what services do they need in their area?

One way to find out is to count them.

The census will find out how people's lives and needs have changed, so that government and local authorities plan the kind of services you and everyone else need.

So on 27 March 2011, every household in England and Wales must complete a census questionnaire.

Everyone needs to take part – including you.

How will ONS protect my data?

It is essential that you feel safe about sharing personal information with the ONS.

The ONS is an internationally trusted provider of statistical information. It owns all census data and is responsible for its security:

- Personal census data is protected by law.
- All census staff sign and are bound by an individual commitment to confidentiality.
- The ONS will not share your personal information with anyone else.
- Census questionnaires are stored on microfiche and kept confidential for 100 years.
- All ONS systems and processes are built with very strong security safeguards.

- Your information is used only to produce and analyse numbers of people.
- All census data is processed in the UK

To ensure the confidentiality of your personal information, all ONS systems, processes, staff and contractors are bound by the:

- Data Protection Act 1998
- Census Act 1920
- Statistics and Registration Service Act 2007

Diamond Jubilee



How would you like to celebrate Queen Elizabeth's Diamond Jubilee in 2012?

The Parish Council would like to hear your thoughts for appropriate ways to celebrate this momentous event and is asking that you write or email your suggestions so that it can begin to formulate a plan.

Perhaps you would like to see a Jubilee Fair with stalls selling local produce and representing local groups, or a Street Party or Communal Event in the Golden Jubilee Park. Do you think that local schools and organisations should be actively involved with the celebrations?

Let us have your suggestions - and even at this early stage, if you are interested in getting involved and helping to organise such an event, we would like to hear from you.

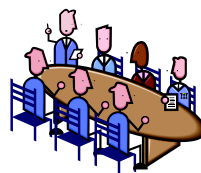
Highways Issues

Traffic congestion, issues with the buses, damage to grass verges, parking, potholes and speeding cars are recurring themes at Council meetings. We work with the Police, the Highways Authority and the bus companies to try to remedy these problems.



Councillors and volunteers have been

trained to use a speed gun and a speed indicator device, which are borrowed from the principal authority from time to time. Speed checks will continue as a deterrent, for those who regularly offend. Saughall aspires to meet the criteria laid down to become a community speed watch area.



When does the Council Meet?

The Parish Council usually meets on the first Monday of the month (or the second if the first is a bank holiday). Notices are displayed on the Council's notice boards and website. Agendas for meetings are always on deposit in the Co-op Store and posted on the Council's website (www.saughall.gov.uk).

Any resident on the Electoral Roll of Saughall or Shotwick Park is more than welcome to attend.

Before the meeting actually begins some time is set aside for members of the public to address the Council on matters of concern and ask questions so long as they have given the Clerk five clear working days notice of their intention to do so. You are free to leave at anytime. You do not have to sit through the whole meeting if you don't want to.

Parish Council Surgeries

Parish Council Surgeries will be held between 10.00am and 10.45am on the following Saturdays:

- 4 December
- 8 January
- 5 February
- 5 March

Notices will be posted on village notice boards, well in advance, to inform where Surgeries are to be held:

Mickle Trafford Community Forum

There will be a meeting of the Mickle Trafford Community Forum at 6:30pm on Tuesday, 16 February 2011 in the Uniform Groups' Headquarters, Fiddlers Lane, Saughall. It is open to the press and public.

Issues relevant to Saughall including potholes and speeding traffic will be discussed at this meeting so please make every effort to attend.



How to Contact Cheshire Police

- Non-emergency calls 0845 4580000
- Only use 999 if...
- There is danger to life
 - Violence is used or threatened
 - A serious crime is in progress or likely to occur
 - A suspect is nearby
 - There is a road traffic collision involving personal injury or danger to others
 - A vulnerable person needs urgent assistance

Report Anti - Social Behaviour Now

If you are experiencing anti - social behaviour and you think that Cheshire West and Chester Council should help address it, or you would like a Community Safety Warden to contact you please ring **0300 123 7033**, Monday - Thursday 8:30am - 5:30pm, Friday, 8:30am - 5pm (excluding Bank Holidays) or fill in the online reporting form at www.cheshirewestandchester.gov.uk

Cheshire West and Chester Council's Responsive Service Guarantee

Abandoned Vehicles – will be investigated by the end of the next working day

Business Waste Compliance – will be investigated by the end of the next working day

Racist or Abusive Graffiti – on relevant land will be removed or obliterated within 24 hours

Fly Posting – will be investigated and removed from relevant land within 2 working days

Fly Tipping – will be investigated by the end of the next working day and cleared within 2 working days following completion of the investigation

Nuisance Vehicles – will be investigated within 2 working days

Dead Animals – will be removed from relevant land within 24 hours

Sharps/Drug Related Litter – will be removed from relevant land within 4 hours

Dog Fouling – will be removed from relevant land within 24 hours

Overflowing Bins – will be emptied by the end of the next working day

Damaged Street Furniture – will be investigated by the end of the next working day.

The Tel. No. to ring is **0300 123 7026**



Keep Saughall Tidy

Don't drop litter, put it in one of the many litter bins dotted around the village or take it home.

Homewatch

Police Warnings



Please make sure that your house, windows, cars and sheds are securely locked. If you see anything suspicious happening please contact the police on **999**. For non-emergency calls and general enquiries contact on **0845 4580000**.

Charity Collection Bags

Trading Standards has received several reports relating to charity collection bags. Household collections are a popular way for charities to collect donations, but beware some collections may be bogus.

Unfortunately, some people may try to

exploit your generosity for their own gain, so please always take the time to read the small print. Know where your donation is going as it may not be where you think. If you have any doubts about the organisation asking for donations, you can check by ringing the Charity Commission helpline on **0845 300 0218** or visit www.charitycommission.gov.uk or just simply donate your unwanted clothing to a charity you know and recognise. You can also call Consumer Direct for further advice on **08454 040506** or visit the watch out section on their website www.consumerdirect.gov.uk

Distraction burglaries

Residents are reminded to check for identification when someone calls at your door following reports of thieves conning their way into homes by pretending to be from utility companies.

Thieves often specifically target elderly or vulnerable people and claim there is an emergency which they need to be let into the house to help with. Neighbours, friends and family of elderly or vulnerable people are also being asked to stay vigilant and report any suspicious behaviour to the police.

Personal Details

Residents are urged not to disclose bank details to anyone who telephones and asks for them, even if they claim to be calling from a bank or a service provider. Genuine companies will never cold call and request bank account information from you. Please let your bank know if you have been contacted in this way.

If you or anyone you know has received a similar telephone call please contact Cheshire Police on **0845 458 0000**.

Dark Nights – Be Seen – Be Safe!

The clocks have gone back and winter has set in. Please make sure you can be seen in the dark. Wear reflective clothes/strips and make sure your children do the same as

they are especially vulnerable during the dark nights. If you ride a bike or a scooter please make sure your lights are working and the same goes for those of you who need a mobility scooter to get around.

Burglars don't like to be disturbed by lights. If image strips are activated they will usually move on. So check your equipment is working and that the timer is on. If it's not working replace the bulb and reposition the unit.

Don't leave windows open on the catch on dark nights, they could be forced open.

Always take your car keys into the bedroom with you and check your premises before retiring for the night.

It's important to carry out checks and take a few simple precautions and report anything that doesn't seem right or appears suspicious. Hopefully it will mean Saughall has a crime free winter.

Would you like to join the Homewatch?

Anyone who would like to join the Saughall Homewatch can ring the Chairman – Ian Humphrey on 880011. Joining does not incur any expense whatsoever and all callers will be welcome.

Ian Humphrey
Homewatch Chairman

Street Cleaning

Following a review of services Cheshire West and Chester Council has identified new standards for the delivery of street cleansing services including litter, detritus, graffiti and fly posting.

The Parish Council has been told that these new standards will be of help to everyone as they ensure fair, equitable and consistent provision across the borough and make sure that Cheshire West and Chester Council can be held accountable by its communities for how services are delivered locally.

In addition to the new standards, the Streetscene Service will be introducing new initiatives under the SMYLE scheme (Supporting MY Local Environment).

This is a change and, as such, it is difficult to fully appreciate how the new service standards will actually apply 'on the ground' within local communities. Consequently, Streetscene officers are arranging meetings with representatives of Parish Councils to discuss, in detail, the actual interpretation and application of the service standards as they apply to individual Parish Councils. It is hoped that these meetings will take place by the end of March 2011. They will also provide an opportunity to discuss and agree minor amendments to the local street cleansing service delivery and negotiate any chargeable enhancements.

This year the Parish Council wants to renegotiate its street cleansing grant from Cheshire West and Chester Council as it currently pays for 22 hours of litter picking a week, whilst the grant only funds 16 hours. The Council's Litter Picking Contractor currently receives £12,092.04 per annum for litter picking but the Parish Council only receives a grant of £5,250 towards this.

The current street orderly grant exists to support parishes where they carry out additional work over and above that provided by Cheshire West and Chester Council but what the scheme does not do is fully fund the additional activity.

Cheshire West and Chester Council has informed that this scheme is under review and additional funding can only be considered for the current financial year. It is aware that the Parish Council takes immense pride in its area and puts a lot of its own resources into maintaining the parish but it needs to be sure that it is delivering the minimum service as set out in the new service standards and that both Councils are complimenting each other rather than duplicating each others efforts before any recommendation can be made on how many additional hours can be funded this year.

Planning Matters

If you are concerned about a planning application that affects you, please remember that Cheshire West and Chester Council does consult with the Parish Council, who is a statutory consultee, as part of its decision-making process. The Parish Council can send a representative to speak at Planning Board meetings.

In forming its views about planning matters, the Parish Council **ALWAYS** wants to know what villagers think, so please make sure you make your views known to us.

Wain House Re-Development



The Wain House re-development is progressing well. The brick work is completed up to the first floor and the first floor is currently being screeded. Block work is being completed on the first floor.

The developer Seddons is arranging a further coffee morning for the end of November 2010.



Proposed Affordable Housing Scheme

The current position in relation to the proposals for affordable housing on the Lodge Lane site is as follows:

The land was advertised in the Land and Property Gazetteer with a closing date of Friday, 10 September 2010.

As a result there were two Registered Social

Landlords (RSLs) (Housing Associations) who submitted detailed expressions of interest. These RSLs were assessed and scored against the criteria within the tender brief.

The site has been offered for consideration and potential sale, subject to the use being only for affordable housing and also with restrictions in relation to the standards of build and accommodation. In particular, if the site is able to be progressed then Cheshire West and Chester Council is seeking to ensure that the proposal meets the highest possible standards against the Code for Sustainable Homes as is possible in this location (either Code 5 or Code 6). If the Lodge Lane proposal goes forward it will be an exemplar scheme for Saughall and Cheshire West and Chester.

There is still a considerable way to go on this, not least in terms of planning, funding and community involvement. However, the recently closed tender process was an open and fair method of seeking interest from all potential parties (and is the mechanism Cheshire West and Chester Council was advised to follow) before it could look in detail at the returned tenders and assess them against the scheme requirements and specified standards.

To help guide and inform the process of selection the two tenderers presented their proposals to an invited selection of representatives from Cheshire West and Chester Council and the Parish Council on 18 October 2010. At this very early stage the presentations of expressions of interest were not intended to be part of a full community consultation event, but were intended for a small selection of representatives to gain an initial view of the emerging proposals and in turn then inform the selection of the preferred tenderer.

The successful and therefore appointed RSL/ Housing Association for this scheme is Chester and District Housing Trust (CDHT).

A Parish Council Working Group is being set up to initially work with CDHT officers to help

shape and inform the physical and technical elements within the scheme. There will be consultation with Saughall residents at the appropriate time.

Potholes

Potholes that appear on our roads can be reported direct to Cheshire West and Chester Council by telephoning the key contact number:

0300 123 7 036 or online at www.cheshirewestandchester.gov.uk

Dog Fouling Nuisance



The Dogs (Fouling of Land) Act 1996 currently applies to the whole of the Chester district. This makes it an offence not to remove, straight away, any faeces deposited by your dog where the Act is in force. It applies to all land open to the air that has public access, whether or not warning signs are displayed. There are exceptions such as carriageways and adjacent footpaths where the speed limit is over 40mph and woodland and some types of common or agricultural land. Also, a blind person with a guide dog is exempt.

This offence carries a maximum penalty of £1,000. An offender may be given the option of paying a £50 fixed penalty notice within 14 days to avoid prosecution and a subsequent criminal record, if found guilty.

It is important when cleaning up after your dog to dispose of the poop-scoop bag correctly by either using a dog waste or litter bin or taking it home and placing it, suitably wrapped, in your own refuse bin. Do not dump the bag in a hedge or elsewhere as this is littering which carries the same penalty as dog fouling.

Cheshire West and Chester Council provides, free of charge, small quantities of bio-degradable poop-scoop bags to dog owners who call into main reception at the Forum offices. These are also available from several dog bag outlets in the

community.

A recent survey has identified dog fouling as being the number one environmental concern in local communities.

The Council wants to shame people into cleaning up after their pets. Therefore, it is launching a campaign through this Newsletter to:

- Change the behaviour of people who do not clean up after their pets
- Increase awareness that dog waste can be placed in any bin
- Reduce dog fouling in all areas of the village
- Encourage residents to report dog fouling in their local area to enable enforcement to be targeted more effectively

It is important that Cheshire West and Chester Council's Streetscene Team is made aware of problem areas. Telephone **0300 123 7033** or alternatively go on line to its website

www.cheshirewestandchester.gov.uk where there is a facility under community safety to report dog fouling.

Golden Jubilee Park - Grand Clean-up

Once again several Parish Councillors, together with Saughall Cricket Club members and other residents of the village, carried out an extensive clean-up of the Golden Jubilee Park and in particular the pond which unfortunately attracts considerable litter. It is hard to understand why certain mindless people use this attractive feature as a dumping ground.

With the use of Andrew Storrar's dingy and specially tailored equipment, large amounts of rubbish were dragged from the pond including several large items such as a double buggy etc. The willing volunteers worked hard for most of Saturday morning despite the very heavy showers, bagging the rubbish for easy removal. Andrew Storrar and Ian Humphrey are pictured with some of

the bags of rubbish.

The Council requests that people do not use this attractive pond for the dumping of their rubbish but use the litter bins that are provided and emptied regularly.



Golden Jubilee Park Development - Progress

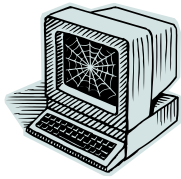
The Council is considering hiring some portable skate park equipment during the Schools' Summer Holidays in 2011. If it decides to do this, financial provision will be made when it sets its 2011 - 12 budget. Quotations have been invited to replace the safety surfaces in the Swing Park and they will also be taken into account during the budget setting process.

A replacement multi-play unit/slide shute was installed recently in the Park. This new piece of play equipment cost £9,763. The Council was successful in attracting grant aid of £3,000 to help fund this play equipment from Cheshire West and Chester Council. It also was given a £1000 contribution towards it by Cheshire West and Chester Councillor Eleanor Johnson from her Ward Councillor allocation. Therefore, the Council only contributed £5,763.

A new cable had to be fitted to the aerial runway because the old one was frayed, possibly due to vandalism. The new cable cost £90 and it cost £250 to fit it.

The drainage in the car park is not working! It is now very muddy and water logged in

places as we have had a lot of rain. The Council is considering what can be done to remedy the situation and will invite tenders for the work required once appropriate professional advice is received.



Parish Council's Web Site

The Council has a presence on the World Wide Web.

Why not bookmark **www.saughall.gov.uk** in your web browser? Here you will find an emporium of material, including archives of past minutes, a gallery of photographs from around the village, the Parish Plan, a list of meeting dates, details of the Council's activities, finances, assets and much more. You can also have your say. Occasional questionnaires invite views on topical issues.

Additions to the photo gallery are always welcome and if you'd like to be a regular contributor we'd love to hear from you.

Parish Council Newsletter

Contributions are required for the Newsletter. If you are a member of a local club or organisation and would like to include an item in the Newsletter, please do so. Items of general interest from individuals would be most welcome. Information can either be emailed to the Clerk clerk@saughall.gov.uk

or handwritten and sent to

10 Merton Close, Little Neston, Cheshire.
CH64 0TR

Would you like to receive a copy of the Newsletter by email (.pdf format) or do you know someone who might like to receive a copy by email? Perhaps they live out of the area and are interested in village news – if so, please contact the Clerk.

It is appreciated that many people do not have access to email so delivery with the Standard Newspaper will continue as before

for most villagers.

Vernon Institute – Repairs and Refurbishment Plan

Year Plan

Repair and resurface top car park

Refurbish the Kitchen

Bond main hall floor, paint white lines and reseal

Strip and felt the ballet room roof may put up a false ceiling

Replace central heating boiler – Wren funding applied for to assist this work

Resurface Church Road forecourt

Remove concrete posts

Year 2

Replace benches on Church Road forecourt

Year 5

Replace Youth Club and Store Room with new buildings.

Vernon Institute Centenary Christmas Celebrations

This year marks 100 years of the Vernon Institute and after its Birthday makeover earlier in the year, we want to mark this historic year with special Christmas celebrations.

On Thursday, 2 December at 6:30pm the village Christmas tree and lights will be switched on with the evening festivities centred round the Vernon Institute. If you would like to join in the parade meet at the Methodist Church at 6:15pm.

There will be a Christmas Bazaar in the main hall with refreshments available. The Saughall Rotary Club are organising Father Christmas to circuit the village on a float with the funds raised going to the Vernon Institute. Anyone able to help with the 'bucket collection' please contact Harry Dobson – Tel: 880803

Anyone interested in running a stall on the evening please contact Jackie Alley - 880606.

There will be a special Christmas Centenary Programme available on the evening and we will be asking local businesses to advertise to mark this special occasion, to get a prime position in the programme please contact Jenny Young – Tel: 881133.

On Saturday, 4 December the Brownies will have their annual pantomime and this year it is **Peter Pan**. Tickets are available from Jo Brookes – Tel: 881284 or Jenny Young – Tel: 881133.

Also, don't forget that on Sunday, 5 December the annual VI Band and Christmas Carol Concert is on in the main hall. Tickets are available on the door and posters will be on display around the village.

We look forward to your support and seeing you all on 2 December to help us celebrate our **Centenary**.

Chris Harman
Chairman of the Vernon Institute
Management Committee
Mob: 07966 759100

Saughall Rotary Club



Following a very successful Saughall Mile and Sports Day in July, the Rotary Club will be distributing the funds raised to the Vernon Institute to purchase a new cooker £750, and £300 each to The Rainbows, The Cricket Club, The Church (to assist with their security system), The Scout Hut, the Golden Link for their Christmas luncheon. A special presentation evening will take place in the near future.

The Club will be out and about in the area on the Santa Sleigh several times during December collecting for local charities. On Thursday, 2 December (lights switch on) they will be collecting around the village and the proceeds from this evening will go to the Vernon Institute. Last year we loaned the sleigh from another Rotary Club but this year we have built our own brand new Santa Sleigh – do come and see it!!

On 8 December there will be a special flower demonstration evening at Mollington Golf Club, Townfield Lane, Mollington. Tickets are £8 which includes a glass of wine and mince pie on arrival, flower demonstration by Beryl Cotton, florist and NAFAS Demonstrator and National Speaker. At the end of the evening the designs created will be raffled. There will be several interesting stalls to tempt you with some Christmas stocking fillers.

The proceeds from this evening will be donated to All Saints School, Saughall to purchase wooden benches for the new wildlife Area and if funds permit to purchase planters for the reception class outdoor learning skills. Tickets are available from Club Secretary: Julie Neenan on 0151 339 1977 or Club President on 01925 655282. Info@courtfarm.co.uk or info@berylcotton.co.uk

Advance notice – the 2nd Saughall Mile and Village Sports day is planned for Saturday, 16 July 2011 – please make a note in your diary. If you are interested in participating in any way, please contact Club President or Club Secretary.

For any further enquiries or information about the Club please contact our Club Secretary.

Beryl Cotton

The VI Clock/ War Memorial

Councillor Andrew Warrington recently visited the County Records Office in Duke Street, Chester and searched the Parish Council Minute books from 1896 to 1948. He found one reference to the war memorial in 1918 and this was that the Government of the day had funding available to provide war memorials and the Parish Clerk had been requested to arrange a meeting to discuss this.



In the light of this information, it is believed that the Clock Tower does not belong to the Parish Council but that it was funded through public subscription and a Government grant.

The Clock Tower's recent refurbishment amounted to £2,000. Councillor RA Storrar, as local ward Member (Cheshire West and Chester Council) provided a grant of £1,000 towards this from his Ward Councillor allocation and the Parish Council provided the other £1,000.

News from All Saints Church

A splendid time was had by all! That was what people said after another successful Parish Lunch at the Vicarage on Sunday, 5 September 2010, supported by people from our three local churches and friends from the community. The food was delicious as always, the company was excellent and the weather was reasonably kind (a bit breezy but dry). We are very grateful to the catering team who always turn up trumps, and also to the many people from the community who support the church in different ways. As well as having a good time, people at the event raised over £600 towards our next project, which is re-roofing the church.



Over ten years ago our architect said that the tiles on the whole roof needed replacing as they are beginning to disintegrate. The work has now become urgent and we are hoping to start as soon as possible. We have obtained quotes and the work will cost in the region of £70,000. We have applied for grants but so far unsuccessfully because most sources will not give for places of worship. We are therefore launching a 'Buy-a-tile' appeal at £5 per tile. There are over 10,000 tiles, so if we can sell them all we can just about cover the cost! Please contact John Hallas (tel: 881317) if you would like to 'buy-a-tile' – what you actually get is a 'tile certificate' expressing our thanks and the satisfaction of knowing that you have quite literally helped to keep the church roof on! (If you can Gift Aid your donation it will increase its value.)

As we have said before, the church has no reserves and at the moment cannot pay its way (the shortfall is £3-5,000pa). It is totally reliant on the regular giving of members and the generosity of other people in the community. When the Thomas Wedge School building is sold there will be capital available but its use will be very restricted (as explained in a separate article). It may be possible to use some for the re-roofing project, but we need to preserve as much capital as possible to generate interest to cover our routine costs. If you believe our church is worth preserving, please buy some tiles!

Finally, a **BIG THANK YOU** to everyone who has provided financial support to the church

over the last year, including the 100 Club (which has now been running for nearly a year and has 114 entries, several of which have won the £50 monthly prize – if you'd like to join, please ring Brian Eyres, tel. 880416, or complete and send off the form included at the end of this Newsletter).

Earlier in the year we replaced our old, unreliable heating boiler with two brand-new, energy-efficient boilers at a cost of over £15,000. Some was covered by a grant, but most of the money was raised through social and fund-raising events and individual donations – which prove it, can be done! We can now guarantee a warm welcome whenever you come to church!

Brian Harris
(Vicar)

Regular Events at All Saints Church

Praise and Play, fun and worship for pre-school children and their carers, meets on Wednesdays in church during school term time, beginning at 1.45pm. Everyone is welcome.

Seniors Group. Come and join this friendly group for a cup of tea and a chat, plus occasional speakers and activities. The group usually meets every other Monday in the meeting room in All Saints, 2.00-4.00pm. The meetings up to Christmas are on 29 November and 13 December.

Messy Church – worship, craft, food and fun for primary school aged children and parents/grandparents/carers. Messy Church happens once a month on Wednesdays in church after school, 3.30-5.00pm. Children must be accompanied by adult and no more than four children per adult – otherwise everybody is welcome! The next Messy Church is on 24 November.

Events and Services at Our Local Churches in November and December

All Saints Church Christmas Fair – Saturday, 27 November from 10.30am, with stalls, raffle, tombola, refreshments – and a chance to see **Father Christmas**. Admission free. Donations of raffle and tombola prizes, bric-a-brac, books, toys etc in good condition will all be gratefully received – please contact Jackie Alley (tel. 880606).

Theatre in the Quarter presents 'Forgotten Fortress', a brand-new musical based in rural Cheshire by Helen Newall, music by Matt Baker, directed by Russ Tunney. One night only at All Saints Church, Wednesday, 8 December, 7.30pm. Last year's production was a sell-out! Book early to guarantee a ticket, £10.00 from Dorothy Spencer (tel. 880772) and Jackie Alley (tel. 880606).

Christmas Market at St Bartholomew's – Wednesday, 15 December from 6.00pm. Christmas gifts, decorations etc – come and buy your last minute Christmas gifts! Tickets are £4.00, including seasonal refreshments. These will be followed by a **Musical Celebration of Christmas**, including the Gresford Handbell Ringers, beginning at 7.00pm.

Special Services:

Christingle Service – Sunday, 12 December 2010, 10.30am at All Saints

Nine Lessons and Carols – Sunday, 19 December, 6.30pm at All Saints, accompanied by the City of Chester Training Band

Christmas Eve:

- 3.30pm Praise and Play Crib Service at All Saints
6.30pm Family Carol Service at the Methodist Church
11.30pm Midnight Communion at All Saints

Christmas Day:

- 9.30am Christmas Family Communion at All Saints
10.00am Christmas Day Family Service at the Methodist Church
10.00am Christmas Day Eucharist at St Bartholomew's

Thomas Wedge School

Work on the remaining part of Thomas Wedge School is now finally complete and the trustees are waiting for Cheshire West and Chester Council to complete the legal processes which will allow them to sell the building.

The terms of the trust for this part of the school have allowed the building to be retained (unlike the rest of the school) and once use by the school ceased it became an asset for the benefit of All Saints Church, under the control of the trustees. (The trustees are all members of All Saints.)

Unfortunately (as explained in the article about church events) the Church cannot afford to keep and maintain the building and the trustees therefore have no choice but to sell. (A sale has been agreed.) The use of the money raised is subject to Charity Commission rules, which mean only interest from the capital can be used. (The asset is deemed to be a 'permanent endowment' and its value therefore has to be preserved.) The only exception to this is that it is possible, in some circumstances, to get permission from the Charity Commission to use capital money for projects that will be of benefit in the long-term future (over 75 years). The church re-roofing project may fall into this category but, as explained in the previous article, we really do need to retain as much capital as possible to maximise the interest we need to cover routine expenditure.

Please feel free to contact me if you would like more details.

Brian Harris
(Vicar)

Saughall Playgroup Coffee Morning

The Saughall Pre-School group held a Harvest Coffee Morning in the Vernon Institute to which all members and volunteers of the Friday Club were invited. After an enjoyable coffee and chat, the children gave an excellent performance which everyone enjoyed immensely. The parents had sponsored the children to sing, with accompanied dramatic actions, which was an absolute delight. The children then presented each member of the Friday Club with a goody bag full of wonderful provisions, which were very much appreciated.



The Saughall Pre-School group is a charitable organisation that relies on fund-raising and recently they have very proudly celebrated 40 years since they first started in the Vernon Institute in 1970. The contact for this group is Mrs. Lynda Johnson on Tel: 01244 880954 (term time only).

Pictured are members of the Saughall Friday Club together with some of the children from the Saughall Playgroup.

Jeanne Storrar

Saughall Friday Club



Saughall Gardening Club

The Friday Club was delighted once again to celebrate a Birthday of one of its members. Joan Bates is one of our newer members and is now very much part of the Friday Club "family". We had a most enjoyable party with good food and cheerful entertainment. The Club still has a vacancy for one more member, and enquiries in the first instance should be made to Gaynor on 01244 881741 or Jeanne on 01244 880226. We are always pleased to welcome new volunteers to help in various ways and would be delighted to hear from anyway who could give a little of their time.

Joan is pictured third from the left below with other members and volunteers, and again with her Birthday cake when clapping to show appreciation (with Barbara Hancox) for the entertainment provided by "George".

Jeanne Storrar



The Annual Show took place on Saturday, 21 August 2010. In spite of difficult conditions the entrees in all sections were excellent and the judges had some difficult decisions to make.

The children's section was well supported. There were animals carved from vegetables, miniature gardens and flower arrangements.

Geoff Barnsley presented Cups to the following winners:

Tara Harris, Amy Johnson, Sue Harris, Jim Bruce, Les Brown, Jean Johnson, Susan Marsh and John Garner.

The September meeting was an illustrated talk on gardening to encourage wild life in our gardens, all through the year.

In October we had a talk on growing orchids. Our speaker demonstrated re-potting, trimming the roots etc of orchids.

In November we had a talk entitled "Australian Adventures".

We plan to visit The Nags Head at Haughton Moss on 29 November 2010 for a Christmas meal. Tickets are still available from Doreen Pointon.

There will be no meeting in December but the AGM will be on 17 January 2011 followed by mulled wine etc.

New members are always welcome.

Verena Moss

MacMillan Coffee Morning

A very successful Coffee Morning was held in the Vernon Institute on Friday, 5 November 2010 in aid of MacMillan Cancer Support. The event was arranged primarily by Peggy Smith who has held a similar Coffee Morning for this very worthwhile cause for several years. There were several

fund raising stalls for Macmillan, and one in aid of The Hospice of the Good Shepherd. The event was very well attended and everyone was most generous. Peggy is very grateful to everyone who helped and contributed.

Jeanne Storrar

Independent Living Centres – The Facts

The Independent Living Centres offer a wide range of equipment and professional services to support people who need help to live independently, including people with disabilities and older people.

Both centres have a 'one stop shop' run by friendly, knowledgeable staff who provide all the information and advice you need about equipment and services.

Each centre has a dedicated team on hand to help you make informed choices. You can discuss your personal requirements on a one-to-one basis.

There are Occupational Therapy staff who provide specific advice or demonstrate equipment that may help you to manage your particular difficulties.

Equipment

There is a wide range of equipment on display which can help you with your daily activities, such as washing and dressing, getting in and out of bed or around the house and much more.

For a realistic assessment of your needs each centre has specially adapted rooms set up, such as a kitchen, bedroom, bathroom and lounge area. They are packed with the latest equipment so that you can see what's on offer and 'try before you buy'.

A team of professionals are there to help you find out what products are available and are right for you.

How the service works

You can access the services in a number of ways:

- referral by a health or social care professional;
- referral by a voluntary agency;
- contact direct.

No matter what your circumstances, whichever way you access the services you can be assured of impartial and professional advice.

The Centres work closely with voluntary agencies such as Age Concern, Vale Royal Disability Service, Red Cross, Cheshire Carers Centre and IRIS (a visual impairment service) to provide additional information, advice and access to other services.

For professionals

Our newly equipped establishments provide a fantastic resource for centre based assessments. They also provide product training.

If you are a health/social care professional and would like to find out more about using these centres please get in touch.

For carers

The Centres offer valuable help and advice to you in your caring role, either directly or by putting you in touch with other agencies that can provide more specialist help.

Contact Information

Enquiries can be dealt with by phone, or you can book an appointment to visit the centres.

There are two centres in the Cheshire West and Chester area:

The Independent Living Centre, Hartford
5 Hartford Business Centre
Chester Road
Hartford
CW8 2AB
Tel. No. 01606 881980

The Poole Independent Living Centre
New Grosvenor Road
Ellesmere Port
CH65 2HB
Tel: 0151 337 6399

Opening times:

Monday – Thursday 9.00am – 5.00 pm
Friday – 9.00am – 4.30pm
Appointments for assessments available
between
9.30am - 3.30pm

Saughall Uniform Groups

Contact telephone numbers:

Rainbows	880671
Brownies	880324
Guides	398190
Rangers	398190
Beavers	350096

To hire the Scout Hut contact Philip Brookes
on 01244 881284.

Ladies Choir

The Ladies choir meets every Monday at
7.30pm in the Methodist Church Hall. New
members are welcome.

Contact Diane barker on 01244 880224

Activities at the Vernon Institute

A variety of activities take place at the
Vernon Institute. Please see the notice
board in the entrance hall for exact times
and contact numbers. Activities include:

- | | |
|--|-------------------------------|
| • Pilates | • Gardening Club |
| • Badminton | • Golden Link |
| • Table Tennis | • Play School |
| • Snooker/Billiards | • Whist |
| • Women's Institute | • Art Club |
| • Saughall Library
in the small hall. | • Dancing
Schools |
| Open:
Tuesday 3pm-
4pm | • Weight
Watchers |
| | • Model Dolls
House Making |

Activities at All Saints Church

- | | |
|--|--|
| • Senior Monday
Meeting | • Youth Football
Teams |
| • Children's Group
Meetings and
Activities | • Uniform Groups
• Card Making
Class |

Activities at the Methodist Church

The following activities are provided in the
Methodist Hall. The Bookings Secretary is
June Downes who can let you have further
details (Tel: 01244 880181).

- | | |
|--------------------------------|---------------------------------------|
| • Mother and
Toddlers Group | • Chester Dance
Academy |
| • Friday Club | • The Art Class
with John Paskin |
| • Mollington
Singers Choir | • Coffee Morning,
once a fortnight |

USEFUL CONTACT NUMBERS

Women's Institute
Mrs Norah Murchie,
Tel: 880701

Saughall Cricket Club
Mr Brian Huxley, Tel: 880753

Saughall Table Tennis Club
Mr Bob Salisbury, Tel: 881323
email:
rm.salisbury@btopenworld.com

Saughall Community Day
Centre
Church Road, Saughall
Tel: 880474

Uniform Groups and Scout
Hut Bookings
Phil Brooks
Tel: 881284

VI Badminton
Chris Harman Tel: 880205
email: chrisharman@aol.com

Saughall Gardening Club
Barbara Goode,
E-mail:
barbara@gardencycles.
wanadoo.co.uk
Tel: 880513

Saughall Colts Junior Football
Club
Football for children aged 6-16
Mr Andy Youde 881896
www.saughallcolts.co.uk

Golden Link Club
Margaret Grain,
Tel: 881294

All Saints Primary School
Headteacher – Donna Prenton
Tel: 981090

All Saints Church
Vicar: Rev Brian Harris
Tel: 880213
Email:
brian@jbharris.fsnet.co.uk

Church Wardens
John Hallas Tel: 881317
Brian Eyres Tel: 880416

Pre-School Group
Mrs Lynda Johnson, Tel:
880954 (Term time only)

Saughall Neighbourhood
Management Team
Co-ordinator
Tony Summers
0770 762 2062
saughall.safety@tiscali.co.uk

Christmas Quiz Night & Fish & Chip supper

Friday 17 December
7.30pm at the
Vernon Institute

£6 per person

Tickets available from
Tony Summers
01244 881366
or Jenny Young
01244 881133

All money raised from this event will
help to fund the 2011 Fun Week,
which provides activities for children
in Saughall during the
summer Holidays.

Run by Saughall Neighbourhood
Management Team

ST. BARTHOLOMEW'S
CHURCH, SEALAND



INVITE YOU TO THEIR

MUSICAL CELEBRATION OF CHRISTMAS

WEDNESDAY 15TH DECEMBER

WITH GRESFORD HANDBELL RINGERS
@ 7.30 P.M.

TOGETHER WITH A
CHRISTMAS MARKET
FROM 6.00 P.M.

WITH CHRISTMAS GIFTS TABLE
CHRISTMAS DECORATIONS, ETC.
(COME AND BUY YOUR LAST MINUTE CHRISTMAS PRESENTS)

CONCERT TICKETS £4.00
(INCLUDING SEASONAL REFRESHMENTS)

PLEASE VISIT OUR LOVELY CHURCH
WHERE YOU WILL ALWAYS FIND
A WARM WELCOME



CONTACT TEL. NO. 01244 880226
OR
01244 881393

WHO'S WHO on the Council

Parish Councillors		
Kathy Ford 6 Vernon Close Saughall Chester CH1 6BH 01244 881459 katherine.ford1@btinternet.com	Dennis Holman – Vice Chairman 28 The Ridings Saughall Chester CH1 6AX 01244 881593 d.holman@chester.ac.uk	Ian Humphrey (also Homewatch Co-ordinator) 1 Smithy Close Saughall Chester CH1 6ED 01244 880011
Jean Johnson Oaktree Nurseries Fiddlers Lane Saughall Chester CH1 6DH 01244 880895	John Johnson Oaktree Nurseries Fiddlers Lane Saughall Chester CH1 6DH 01244 880895	Brian Kerr OBE 33 Greenway Saughall Chester CH1 6EG 01244 880347 briankerr@uwclub.net
Janette Knox 7 Rosewood Grove Saughall Chester CH1 6AN 01244 881259 janette.knox@calday.wirral.sch.uk	Rakesh Shukla 30 Church Road Saughall Chester CH1 6EP 01244 881765 rakesh@saughallpharmacy.co.uk	Andrew Storrar Hey House Farm Fiddlers Lane Saughall Chester CH1 6DH 01244 880226 andrew.storrar@cheshirewestandchester.gov.uk
Jeanne Storrar Hey House Farm Fiddlers Lane Saughall Chester CH1 6DH 01244 880226 jeannestorrar@hotmail.co.uk	Helen Thorniley-Jones 18 Meadows Lane Saughall Chester CH1 6AYJ Hthornileyjones@aol.com	Andrew Warrington 6 Worsley Avenue Saughall Chester CH1 6BG 01244 880418 andrew@awarrington4.wanadoo.co.uk
Dolores Whitton JP 2 Darlington Crescent Saughall Chester CH1 6DB 01244 881411 dandpcwhitton@talktalk.net	Jenny Young – Chairman 212 Hermitage Road Saughall Chester CH1 6AE 01244 881133 chairman@saughall.gov.uk	Clerk to the Council Shirley Hudspeth 10 Merton Close Little Neston Cheshire CH64 0TR 0151 336 3367 clerk@saughall.gov.uk
Cheshire West and Chester Councillors		
Brian Crowe Glebe Farm Coalpit Lane Mollington Chester CH1 6JL 01244 851384 brian.crowe@cheshirewestandchester.gov.uk	Eleanor Johnson The Oaks Long Green Barrow Chester CH3 7JU 01244 300339 eleanor.johnson@cheshirewestandchester.gov.uk	Andrew Storrar Hey House Farm Fiddlers Lane Saughall Chester CH1 6DH 01244 880226 andrew.storrar@cheshirewestandchester.gov.uk
Member of Parliament	Local Police	Homewatch
Stephen Mosley MP Unionist Buildings Nicholas Street Chester. CH1 2NX Tel 01244 458120 Email: Stephen@chestermpp.com Website: www.chestermpp.com	Blacon Police Station, Blacon Avenue, Chester, CH1 5BD 01244 350222 (The number to ring when reporting a crime) Saughall's PCSO is Wendy Leason Wendy.leason@cheshire.pnn.police.uk 0845 4580000 (switchboard)	Ian Humphrey (Chairman) 1 Smithy Close Saughall Chester CH1 6ED 01244 880011

If you would like to advertise your business in our next newsletter or you represent a local non profit making group in the parish and would like to promote your group, please contact the Clerk.

SUPPORTING OUR LOCAL BUSINESSES

‘USE THEM OR LOSE THEM!’

CO-OPERATIVE STORE

Church Road, Saughall.
‘Everything you need from your local
friendly village shop’
Tel. No. 881408

SAUGHALL SERVICE STATION

Church Road, Saughall
‘For all your motoring needs’
Tel. No. 881625

CHESTNUT HOUSE DAY NURSERY

Church Road, Saughall
‘Quality care for Children’
Tel. No. 880371

BARRA BOARDING KENNELS

Parkgate Road, Saughall
Tel. No. 880837

LITTLE CREEK DOG KENNELS

Kingswood Lane, Saughall
Tel. No. 880267

FAR EAST CHINESE TAKE-AWAY

Fiddlers Lane, Saughall
Tel. No. 881621

BELL STONE MASONRY

8 Eastfields, Saughall
Tel. No. 657925
Email: www.bsmasonry.co.uk

SAUGHALL POST OFFICE

Within the Co-operative Stores,
Tel No. 880403

P DAVIES

Qualified Tradesman
- Painting & Decorating
- Property Maintenance
(Private & Domestic)
Tel. No. 880564
Mobile No. 07708330058

OAK TREE NURSERIES

Fiddlers Lane, Saughall
‘Come along and see us – you won’t be
disappointed’
Tel. No. 880895

CREATIVE PHOTOGRAPHY

‘Wedding and Social’
Maurice Alley, Church Road, Saughall
Tel. No. 880606

W. GATER, PLUMBER

‘Plumbing and Heating Engineers’
Tel. No. 880654

EPTOWING

Mobile Tow Bar Fitting Service
Darlington Crescent, Saughall
Tel. No. 881609

DR. WILLIAM RICHARDSON

Homeopathy
Church Road, Saughall
Tel. No. 880574

CHESTER SECURITY SYSTEMS

32, Church Road, Saughall
‘Our business is your peace of mind’
Tel. No. 881399
Email info@chestersecurity.co.uk

SUPERIOR DRY CLEANERS

In your area every week providing the
following:

- Dry Cleaning Service
 - Ironing Service
 - Alterations and new zips
 - Carpet, rug and upholstery cleaning
- Tel. Rob Parry on 07788 157431

NEIL RICHARDS – ELECTRICAL CONTRACTOR

All types of electrical work undertaken
Tel. No. 881732
Email: nsrichards@yahoo.co.uk

**Explore
Learning**

CHESTER PAINT STRIPPERS

Reclaimed doors & fire places for sale
Sea Hill Farm, Saughall
Tel. No. 881771

READES RESIDENTIAL

‘Lettings and Property Management’
www.readesresidential.com
Tel. No. 08450 097 097

SAUGHALL VILLAGE SURGERY

Church Road, Saughall
Tel. No. 881590

WHEATSHEAF INN

Parkgate Road, Saughall
Tel. No. 851804

EGERTON ARMS INN

Hermitage Road, Saughall
Tel. No. 882001

JS MORTGAGES

11 Hermitage Road, Saughall
Tel. No. 881848
Email: jaqirsingh@btinternet.com

SAUGHALL PHARMACY

30 Church Road, Saughall
‘Your very own friendly dispensing
chemist’
Tel. No. 881765

GOBLIN GARDENING

43 Rakeway, Saughall
Tel. No. 657967
Email: goblin garden@btinternet.com

PH LEWIS – JOINER

All types of work undertaken – Windows,
doors, floors, etc
Tel. No. 0789 424 0289

A & GO PLASTERING

Quality work guaranteed. For a free no
obligation quote phone Gordon on:
Tel. No. 880765 or Mobile: 0791 773
4376

FIX & REPAIR

CELIA'S FLOWERS (LOCAL FLORIST)

Weddings, Funerals, Gift Bouquets etc.
City & Guilds Floristry
Tel. No. 01244 377160
Email: cgifford14@tiscali.co.uk

DJ GARDENING SERVICES

Grass Cutting/Hedge Cutting
Tree Surgery/Pruning
Gravel Work/Paving/Turfing
Driveway/Cleaning
OAP Discount Rates
Domestic/Commercial
Fully Insured
Free Estimates
Tel. No 01244 880802
07800944754
Email: daveyedwards71@hotmail.co.uk

Cu CONNECTED ELECTRICAL CONTRACTORS

We provide a complete range of domestic and commercial electrical installation services. All our work is performed by time-served professional tradesmen. We are fully insured and all work undertaken is guaranteed and installed to the 17th edition of the BS57671 IEE working regulations, giving you complete peace of mind in every aspect of the services.

For a free estimate please call Cu Connected on 01244 881196 or 07578 879098 or email info@230volts.co.uk
www.230volts.co.uk

Please note we will beat any genuine like for like estimate and we offer a 10% discount for the over 65's

BESPOKE BRIDES

Designer wedding gowns and bridesmaid dresses to suit all budgets.
Coalpit lane, Saughall, Chester
www.bespokebrides.co.uk
Tel. No. 0800 619 9348

B. J. CLEGG & SON

'Plumbing, heating and gas fittings'
Tel. No. 880120

YVONNE MCSHERRY

Explore Learning is a network of Ofsted registered tuition centres for 5-14 year olds, where inspiring tutors work with children on Maths and English courses that are created to meet and adjust to the individual needs of every child. As our courses are also mapped to the National Curriculum, Explore Learning complements and supports your child's work at school.

Explore Learning caters for children of all abilities, as our individualised learning programmes allow our members to work at a level and pace best suited to their needs; stretching and challenging them where appropriate. Our excellent tutors make our centre a fun and friendly place where children boost their confidence, make academic progress, and enjoy learning!

We offer all families a FREE INITIAL CONSULTATION at our education centre located inside Sainsbury's, Great Boughton. During this session, one of our inspiring tutors will work with your child and demonstrate how exciting maths and English can be. They will then take the time to discuss your child's individual needs with you and explain how Explore Learning can unlock their potential.

To book your free trial session, or for more information, please call us on 01244 343433 or visit our website at www.explorelearning.co.uk/chester.

COVENANT WINDOWS

Unit 1, 2 Fiddlers Lane, Saughall
Tel 01244 880180

Email: paul@covenantwindows.co
For all double glazing, windows, doors & conservatories

RON STUART AERIALS

'All types supplied and installed'
Tel. No. 880352

UTILITY WAREHOUSE DISCOUNT CLUB

Would you like to save money on all your household bills?

We don't seem to repair things anymore. Something is worn or broken and it causes a cascade of poor and expensive replacements.

For example:
wood rot or wear and tear on staircases and banisters
metric replacements that won't fit e.g. locks, door & furniture fittings
machines, stoves and Agas, where there is no replacement part and which are difficult to move for repair purposes
wooden conservatories, rotten at the base, but where most of the upper construction is still good.

Fix and Repair looks at these types of problems and considers a cost effective solution:

bespoke brackets can be made to effect an unobtrusive repair for stairs and banisters;
original fittings can be repaired
replacement parts can be made and fitted/welded in to fix heavy stoves and machinery in situ;
the rotten wood of a conservatory can be removed and replaced with brickwork.

In these times of economic austerity, can you afford not to consider a repair first?

Fix and Repair can also fix new shelves, doors, locks, plumbing (e.g. a downstairs WC), kitchens, brick fireplaces, wood-burning stoves ... Flat pack furniture can be assembled and/or modified if it doesn't quite match requirements (e.g. extra doors/shelves can be fitted).

Please call if you think **Fix and Repair** can help you.

Copperfield, Church Road, Saughall.
Call Howard on Mobile: 07949 377943

PETER GARNETT

'For all your decorating needs'
Tel. No. 881249

JUST A MOW

**REIKE MASTER TEACHER
ICHT IIHHT MASC BSY(MED-
TEACH)**

Email: VonnieMcS@aol.com

Tel: 01244 881691

Mob: 07986 21 2128

Web: www.reikipower.co.uk

**CARAVAN CLUB
CERTIFICATED LOCATION
5 VANS**

ELECTRIC POINTS AVAILABLE

OPEN April – October 2011

Mill Cottage North, Parkgate Road

Tel: 01244 881284

Mob: 07715553743

P.A PROPERTY SERVICES

Extensions, Garage Conversions,
Kitchen and Bathroom Installations,
Plastering, Painting and Decorating.

Free No Obligation Quotations

Call Phil on: Tel 01244 881684

Mob 07731803464

Join the Club!

Single bill for all your utilities
Award-winning customer service
Value that's unbeatable
Easy to switch

**Save 5% on all your petrol and
household shopping too!**

Ask How! Get in Touch!

Call Rachel on 881181 or 07877 670625

www.telecomplus.org.uk/rachellowe

WINTER SERVICES

Do You Require any Garden Work,
Hedge Cutting, Tree Pruning, Shrub
Maintenance, Garden Clearance, Jet
Washing - Patio, Drives etc, Exterior
Painting, Fence Painting Fencing and
Decking

Call Chris for a free quote

01244 880430 or 07814342653

Email justamow27@hotmail.co.uk

THE BEAUTY LODGE

Newcroft (off) Church Road, Saughall
Full range of beauty services available

Facials, Pedicures, Manicures, Ear
Piercing, Massage, Eye Lash Tints,
Waxing, Brow Shape, Individual Eyelash
Extensions, Wedding Preparations,
Electrolysis, Hopi Ear Candles
Please Tel 01244 881111 for an
appointment.

There is still empty space available! If you would like your local business advertised in the next newsletter, please contact the Clerk.

All Saints, Saughall



Win £50

(Help your Village Church too!)

Maybe you don't go to Church very often – or hardly at all – but where would you be if All Saints, your Parish Church, wasn't there? Have you attended a Baptism there? A marriage? A funeral? Did you enjoy the Village Fete? Christmas Fair? Christmas Carol Services? The answer's likely to be "yes" to a number of these! Your Parish Church will *always* be there for you ... Can you be there for your Church in its time of need?

Spiralling overheads mean drastic action is needed. This means (you guessed it!) we need money. The Church runs a "100 Club" which you can subscribe to NOW for only £2 per month. Every month, there'll be a randomised draw and the winner will win £50. If the Club grows, as we pray it will, prizes will increase and you'll win more!

If you can help, fill in the membership form and Standing Order Mandate below and post the Membership form to the Vicarage (or drop it in). Post the mandate direct to your bank (but don't forget to return the membership form to us or you won't be in the draw!) Remember it's your Church – please support it.

PS: If you don't wish to subscribe by Standing Order you can pay by cheque payable to:
'All Saints Saughall 100 Club'.

Thank you

All Saints, Great Saughall "100 Club" Rules

1. Those operating the Club on behalf of the Church hereafter referred to as 'the Organisers', will hold all members' names, addresses & telephone numbers.
2. The Organisers, appointed by the Parochial Church Council (PCC), will be Rev. B. Harris, Mrs. M. Wilkinson, Mr. B. & Mrs. C. Eyres
3. The list of Organisers will be able to be added to and/or changed in the future as circumstances dictate.
4. The Organisers will not be permitted to participate as members in the draw.
5. All members must be over 18 years of age at the time of the draw.
6. Stake per number will be £2 per month payable by Bankers Order Mandate *in advance* – in other words, on the First of each month prior to the draw. Persons not wishing to subscribe by bankers order may pay annually by cheque *in advance* but the *membership form* section of the application form must still be completed and returned.
7. Members wishing to contribute greater amounts may have more than one stake per month and must make this clear on their Membership form.
8. On receipt of a completed Membership form and payment method being confirmed, members will be contacted to inform them of their draw number.
9. Only members up to date with their subscription will be entered in the draw.
10. Numbers not paid for at the time of the draw will be void in that draw.
11. Winning' numbers will be checked to ensure the Club has received their stake prior to the winner being confirmed.
12. If a drawn number does not belong to a fully up-to-date subscribed member, another number will be drawn.
13. Draws will take place each month using a Random Number Generator computer programme in the presence of three Organisers.
14. They will take place on, or before, the 18th of the month to allow names of winners (or the winning number if the winner requests anonymity) to be published in the next edition of the Parish Magazine.
15. Winners will be notified by the Organisers and paid from the Club bank account.
16. The prize fund consists of one prize of £50.
17. As membership grows the prize may be increased and/or secondary prizes added. Members will be notified in advance of changes.
18. Draw numbers will be allocated as members join. I.e. the 51st member shall be allocated draw number 51, the 52nd, 52 and so on.
19. If, for whatever reason, not all numbers in the draw list are taken and a 'vacant' number is generated on making the draw, further numbers will be generated until there is a winning number.
20. In all matters pertaining to the draw and its operation decisions of the Organisers will be regarded by members as final and binding.
21. Participation in the All Saints, Great Saughall '100 Club' implies acceptance of, and agreement with, all its expressed rules.

All Saints, Saughall '100 Club'
Membership Form

I apply to join the All Saints, Saughall '100 Club' and confirm that I have either;

- ☐ Posted a Standing Order Mandate to my Bank subscribing to ____ entries per draw (i.e. £ ____ per month)
OR
☐ Enclosed a cheque for 12 months membership for ____ entries per draw at £24 per entry = £ ____

Name: (Print)

Address: (Print)

.....

Postcode:

Membership to start:

Signed:

Date:

Telephone Number

Organiser: Rev. B Harris, The Vicarage, Church Road, Saughall,
CHESTER. Tel. 01244 880213

All Saints, Saughall '100 Club'
Standing Order Mandate

TO..... Bank plc

Address:.....

..

Please pay Alliance & Leicester Commercial Bank, Bridle Road, Bootle, Merseyside, L30 4GB (sort code: 72 00 02) for the credit of All Saints, Saughall '100 Club' (Current account N° 30628680) the sum of POUNDS on the 1st day of (month) 2011 and the same amount monthly thereafter until further notice.*

Please debit my/our account, titled Acct N° Sort Code

Signed:

Address:

.....

.....

- Insert appropriate amount