

# PARISH NEWSLETTER

Issue No 32

March 2006

## **Annual Assembly 7:30pm Wednesday 19 April 2006**



The Parish Council invites residents of the parish to the Annual Assembly which will be held at 7:30pm on Wednesday 19 April 2006 at the Methodist's Hall. A report will be presented on the work carried out during 2005/2006. More importantly, this is an open meeting providing you with the opportunity to speak out on any matters of concern and on issues you would like the Parish Council to address.

**This is your meeting, so do come along and have your say!**

## **Parish Council Elections – 4 May 2006 Do you want to stand ?**



This Parish Council is coming to the end of its four year term of office and will stand down in May.

There are 14 seats in total on the Parish Council, 13 for Councillors representing the Saughall Ward and 1 for the Shotwick Park Ward.

Proceedings during the 32 days before the election must be conducted in accordance with a set timetable.

### **Notice of Election**

The Returning Officer must give Notice of Election. Notices will be posted on the Parish Council's notice boards. If you want to be a candidate you must ensure that you obtain a nomination paper from the Returning Officer by getting in touch with the Elections Officer, Christine Lawley, who is based at the Town Hall,

Chester.

### **Nomination Papers**

The nomination paper must be completed with your full name, place of residence and description. Each nomination paper must be signed by a proposer and seconder ("subscribers") who must be electors for the locality and the relevant Ward for which you wish to be nominated. A nomination is void unless the contestant consents in writing, which must be attested by a witness and must contain a statement that the candidate is qualified and the particulars of the qualification.

Nomination Papers must be delivered at the place fixed by the Returning Officer and he will adjudicate upon it. He may hold it invalid only on the ground that the particulars of the candidate or subscribers are not as required by law or that the paper is not properly signed. His decision on these points is final.

Having adjudicated, the Returning Officer must publish a list of candidates standing nominated and of persons who were nominated but who no longer stand nominated.

### **Method of Election**

If there are enough vacancies for the validly surviving candidates, the Returning Officer must, not later than 11am on the day of the election, declare them elected.

If their number exceeds the number of vacancies, a poll must be held by the method of secret ballot. If there is a tie, then the Returning Officer must decide by lot.

## Dog Fouling

The Dogs (Fouling of Land) Act 1996 makes it an offence to allow your dog to foul in public areas and allows local councils to make on the spot fines.



Clear up after your dog. Put it in one of the red bins provided or take it home.

## Parish Council Surgeries

The Council holds a Surgery in the Parish Room, 2 Fiddlers Lane once a month on a Saturday between 10-10:45am. Surgeries will be held on the following dates:

- 1 April 2006
- 6 May 2006
- 3 June 2006

Drop in and discuss your concerns with Parish Councillors. If you have any ideas on where future Surgeries could be held, please tell the Clerk.

## Youth Activities

The Council has put £1,000 aside to pump prime activities arranged for the youth of the village. If you, or your organisation, have an idea for an event or activity for young people and would like the Council to make a financial contribution, please get in touch with the Clerk.



### Keep Saughall Tidy

Don't drop litter, put it in one of the many litter bins dotted around the village or take it home.

## Council Tax

The Parish Council has asked Chester City Council for a Parish Precept of £38,637 for 2006/2007. The budget in total comes to £57,696. Unlike the other two tiers of local government, Parish Councils do not receive Government grants and are wholly funded by means of the local Council Tax - £32.89 per household per Band D property.

How your £32.89 is to be spent is set out in the Council's budget below:

Budget Head	Amount (£)
<b>Environment</b>	
Miscellaneous Minor Repairs	100
Street Cleaning	11,000
Trees	300
Litter Bins	300
Cheshire Railings	500
Grass Cutting – Playing Field	2,750
Play Equipment	2,000
Play Surface Repair	900
<b>Golden Jubilee Park</b>	6,200
<b>Finance and General Purposes</b>	
Administration	16,310
Annual Payments	9,336
Vernon Institute	2,000
Contingency	500
<b>Highway Matters</b>	
Bus Shelter Replacement	2,000
Bus Shelter Maintenance	3,000
Safety Initiatives	500
<b>Total</b>	<b>57,696</b>



## Uniform Groups Need Help

The Uniform Groups are looking for volunteers (over 18 years of age and under 65) to help out approximately 3 hours a week with:

- Cubs
- Brownies
- Beavers
- Guides
- Rangers
- Rainbows

This voluntary work can be very rewarding and full training will be given. If you are interested please contact Jenny Young on 01244 881133.

## Parish Council Meetings Public Speaking Time



You are very welcome to attend Parish Council meetings. A copy of the Council's Agenda and Minutes are available at the Woodvale Stores and on the Council's website [www.saughall.gov.uk](http://www.saughall.gov.uk). Council meetings are usually held at 7:30pm on the first Monday of the month in the Vernon Institute.

Details of all public meetings are published on the Parish Council's notice boards and website.

Ten minutes are allocated at the beginning of each meeting to enable any petition presenters to speak in support of their petition(s) and for questions from the public to be taken, providing five clear working days written notice has been given, or on urgent matters, providing a request is made to the Chairman prior to the commencement of the meeting and Council's consent is given.

For further advice please contact the Clerk.

## Village Directory/Handbook



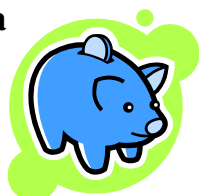
The Council intends to publish a village Directory/Handbook. The names, addresses and telephone numbers of local businesses and organisations listed at the back of this newsletter will form the basis of this publication.

If you would like your business or organisation to be included in this new publication please let the Clerk have the details.

## Saughall Homewatch Scheme

Saughall Homewatch is looking for a volunteer to act as Village Co-ordinator for its activities. The Homewatch Group would welcome anyone who is interested in getting involved. If you could spare us a little of your time or would like to ask for further details, please contact Jeanne Storrar on 01244 880226 or Keith Stinson on 01244 880607.

## Could You Claim Extra



## Money

My name is Angela Robinson, and I am an experienced disability rights adviser working on a project for Dial House in Chester. The aim of the project is to increase awareness of the benefits which disabled and older people in rural areas of Chester District could be entitled to claim.

Benefits such as Attendance Allowance, Disability Living Allowance, Incapacity Benefit, may be awarded to people who are having difficulties because of their age or disability.

To find out if you qualify and to arrange a free confidential appointment please contact me on 01244 345655. Leave your name and telephone number if I'm not in the office and I will contact you as soon as possible.

***This project is about putting money that YOU are entitled to in YOUR pocket.***



## 'Bag It' Glass and Battery Recycling Scheme

The collection dates for the 'Bag It' Glass and Battery Recycling Scheme are on the following Tuesday's in 2006:

- |  |                              |
|--|------------------------------|
| • March 7 <sup>th</sup>                  | • August 22 <sup>nd</sup>    |
| • April 4 <sup>th</sup>                  | • September 19 <sup>th</sup> |
| • May 2 <sup>nd</sup> & 30 <sup>th</sup> | • October 17 <sup>th</sup>   |
| • June 27 <sup>th</sup>                  | • November 14 <sup>th</sup>  |
| • July 25 <sup>th</sup>                  | • December 12 <sup>th</sup>  |



## New Year's Honour

Many of you will have seen Brian Kerr's name in the New Year honours list. Brian has been awarded an OBE for services to local government – and that career started in 1975 when he first became a Saughall Parish Councillor. He is currently Chairman of the Council, having served in that role a number of times before.

Between 2000 and 2004 Brian was Chairman of the National Association of Local Councils and still serves as a Vice-President: he also chairs the NALC Finance Committee. His Chairmanship of

the Association saw the introduction of quality status and the national training strategy.

Brian has also served as Chairman of the Cheshire Community Council and is the current Vice-President: He was also a Chester City Councillor for 12 years.

## Planning Applications Just Over the Border in Wales



The Parish Council has become very concerned about planning approvals for developments just over the Saughall border as these developments impact on the village in terms of traffic flows and increased use of village facilities and on local businesses.

Flintshire County Council, the Welsh Planning Authority, has no statutory obligation to consult with a Parish Council outside of its own administrative area. It does consult with Chester City Council but Chester City Planners are not prepared to inform the Parish Council of any planning applications on which their Council is a statutory consultee.

The Parish Council has tried on a number of occasions to persuade the City Council Planning Officers to open a dialogue with them on these applications but without success. This has led to a great deal of frustration as decisions could not be influenced and were made without regard to the problems they caused to village life.

Consequently, Members of the Parish Council have met representatives of Sealand Community Council and agreed a working relationship between their two respective Clerks. Each Clerk, in future, will inform the other of any planning application that their respective Planning Authority is consulting them on that is on their borders and may impact on their village. Any observations made will then be passed to the Planning Officers concerned.

## Parish Plan – Local Context Testing

Government Office North West (GONW) has selected this Parish to test connection between the Regional Delivery Framework priorities, community aspirations and Government priorities. Cheshire Community Council will facilitate a consultation and workshop.

There are only three communities being looked at within the region, one from each County. It is important that the Council and the wider community engage in this exercise, it could result in funding opportunities in the future.



### Golden Jubilee Park

The Council has submitted a loan application to the Public Works Loan Board (PWLb) to borrow £30,000 over 20 years so that the necessary development work on its land on Fiddlers Lane can be undertaken this Spring.

If the application is successful it is hoped that the cricket square will be ready for use in 2007.

As well as a cricket pitch, there will be a hard surface behind the Uniform Group's Headquarters with a basketball frame and net. Work will be carried out on the environmental area including the two ponds and the perimeter path will be finished and a number of community seats will be installed in the park.

The Council still intends to exploit as many grant aid opportunities as possible in order to finance this important development that will be enjoyed by generations of local people.

### A5117/A550 Deeside Park Junctions Improvement



This scheme involves improvements to the A550/A5117 between Deeside Park and the M56 Junction 16, at present a dual carriageway of approximately 5 kilometres in length experiences heavy congestion and delays for users at peak times. It also involves grade-separation of the three junctions at Woodbank, the A540 and M56.



This scheme will significantly reduce congestion and delays along the route as well as improving safety and providing improved facilities for Non-Motorised Users, such as equestrians and walkers.

The Deeside Park Junctions Study was started with the objective of developing a long-term strategy to deal with existing safety and congestion problems on the A5117 between the M56 and the Deeside Park Interchange. The study was completed in October 2001 and a number of recommendations made which included new two-level junctions along the A5117 and A550, facilities for Non-Motorised Users, a comprehensive review of Public Transport Services and the provision of better information on public transport services and on its availability.

The North West Regional Assembly supported the recommendations and a submission was made to Ministers recommending that a scheme be added to the Government's Targeted Programme Of Improvements (TPI). The scheme was subsequently added to the TPI in February 2002 at the same time that the preferred route was announced.

### **What happens next?**

In September 2003 The Highways Agency appointed to Mowlem/Owen Williams partnership a contract under the Highways Agency's Early Contractor Involvement (ECI) initiative, to take the scheme forward. This allowed for detailed planning work to be carried out while the scheme is taken through the statutory procedures.

The Highways Agency published Draft Orders under the Highways Act 1980 on 17th March 2005. These seek the powers necessary to acquire the land and build the scheme. The public had a chance to comment on the draft Orders describing the proposals up to 30 April 2005.

Following receipt of a number of objections a Public Inquiry (PI) was held in front of an independent Inspector. This took place at the Mollington Banastre Hotel, Parkgate Road, Chester for 2 weeks from Tuesday 25th October 2005.

The decision to proceed with the scheme will only be taken after the Secretary of State for Transport has considered the Inspector's Report. This is expected to be announced at any time.



### **Gardening Club**

The Club meets in the Vernon Institute at 7.30pm on the third Monday of each month. (As Easter Monday falls on 17 April this year, the Club will meet on 24 April). There is always a speaker on an interesting gardening related topic. The Club organises trips to places of interest. On Club nights there is a sales table where members bring surplus seeds, plants and gardening items. All proceeds from the sales are donated to the Hospice of the Good Shepherd.

The highlight of the year is the Annual Show. This will be held at the Vernon Institute on Saturday, 27 August 2006. Entry to all classes is free and open to all Saughall residents regardless of being club members. This year there will be a Cup for the winner of the Children's classes in addition to the Adult Classes. Schedules will be available in the early Spring.

New members to the Club meetings are always welcome. The annual subscription is £1 per household.

### **Don't Park on Pavements**

Have regard for pedestrians and don't park on the path. If you do it means that people on foot often have to step out into the road to get passed your vehicle. Parking on footpaths is illegal and dangerous and especially so for people in wheelchairs or pushing prams.

The Council does not want to see local residents fined but the Police have been requested to deal with the problem which has become a real source of annoyance for pedestrians.

The Council requests that you don't park on grass verges because they are being churned up and are becoming an eyesore.

Vehicles parked on the roadway are the best form

of traffic calming.

## **Saughall Golden Jubilee Park Development**



### **HOT SUPPER AND FUN QUIZ**

Friday 31st March 2006, 7.30pm in The Vernon Institute, Saughall

Proceeds In Aid Of Saughall Cricket Club as Part Of Saughall Golden Jubilee Park Raffle And Bar

**Tickets £7** inc. 2-course home cooked supper can be obtained from:

Andrew Storrar

Tel: 01244 880226

Betty West

Tel: 01244 851229

Brian Huxley

Tel: 01244 880753

## **Refuse Collection**

Should anyone need further bags we will post them out, or they can be collected from the Town Hall reception or the call centre.

The garden waste bins will be collected on Thursday 16th March.

The "bag it" glass and battery collection will now be collected on Thursday 30th March. Extra glass will be accepted in bags or boxes.

On an average day we do have 10 refuse vehicles on domestic / recycling collections, 4 garden waste collection rounds, plus special collections and white goods collections, the domestic / recycling rounds collect an average 140.00 tonnes of waste and recyclables on that day.

As you can see to double that work up is an impossibility, we do intend to use any resources we have on clearing problem areas from last Thursdays missed collections, but generally we need people to take their waste in until this Thursday, I understand better than most the problems this has caused, and we do apologise for the inconvenience, but I still think that given the facts of last Thursday and the forecast for the next 48 hours we did have no alternative but to

cancel collections.

We will obviously have a de-brief of the situation, and look at future contingency plans for severe weather conditions, we do have a contingency plan for closure of Land Fill sites, but on this occasion the problem was with the collection, not disposal of waste.

The main factors of our decision to cancel collections were based on the Health and Safety of the public and workforce, also the Highway Authority informed us that all trunk and main roads would be treated first, and minor and side roads would have the lowest priority.

Thank you for your help in this.

Barry Vaughan Davies

Supervisor

Performance and Development

Tel: 01244 402477

## **Activities at the Vernon Institute**

A variety of activities take place at the Vernon Institute. Please see the notice board in the entrance hall for exact times and contact numbers. Activities include:

- Pilates
- Badminton
- Table Tennis
- Snooker/Billiards
- Play School
- Women's Institute
- Gardening Club
- Golden Link
- Whist
- Art Club
- Dancing Schools
- Weight Watchers
- Model Dolls House Making

## **Activities at the Methodist Church**

- Mother and Toddlers Group
- Friday Club

## **Activities at All Saints Church**

- Senior Monday Meeting
- Card Making Class
- Children's Group Meetings and Activities
- Youth Football Teams
- Uniform Groups

## **SUPPORTING OUR LOCAL BUSINESSES**

### **‘USE THEM OR LOSE THEM!’**

#### **WOODVALE STORES**

Church Road, Saughall.  
‘Everything you need from your local  
friendly village shop’  
Tel. No. 881408

#### **SAUGHALL POST OFFICE**

Within Woodvale Stores,  
Tel No. 880403

#### **SAUGHALL SERVICE STATION**

Church Road, Saughall  
‘For all your motoring needs’  
Tel. No. 881625

#### **CHESTNUT HOUSE DAY NURSERY**

Church Road, Saughall  
‘Quality care for Children’  
Tel. No. 880371

#### **FAR EAST**

*CHINESE TAKE-AWAY*  
Fiddlers Lane, Saughall  
Tel. No. 881621

#### **OAK TREE NURSERIES**

Fiddlers Lane, Saughall  
‘Come along and see us – you won’t be  
disappointed’  
Tel. No. 880895

#### **K’s GARDEN CENTRE**

Off Parkgate Road, Saughall  
‘Solve your garden problems’  
Tel. No. 880468

#### **CREATIVE PHOTOGRAPHY**

‘Wedding and Social’  
Maurice Alley, Church Road, Saughall  
Tel. No. 880606

#### **SAUGHALL VILLAGE SURGERY**

Church Road, Saughall  
Tel. No. 881590

#### **SAUGHALL PHARMACY**

30, Church Road, Saughall  
‘Your very own friendly dispensing  
chemist’  
Tel. No. 881765

#### **CHESTER SECURITY SYSTEMS**

32, Church Road, Saughall  
‘Our business is your peace of mind’  
Tel. No. 881399

#### **B&B MINI SKIP HIRE**

Hermitage Road, Saughall  
Tel. No. 881681

#### **GREYHOUND INN**

Seahill Road, Saughall  
Tel. No. 880205

#### **WHEATSHEAF INN**

Parkgate Road, Saughall  
Tel. No. 851804

#### **EGERTON ARMS INN**

Hermitage Road, Saughall  
Tel. No. 882001

#### **PIANO AND ORGAN TUITION**

‘Children and Adults’  
Derek Whatling  
Tel. No. 881388

#### **W. GATER, PLUMBER**

‘Plumbing and Heating Engineers’  
Tel. No. 880654

#### **RON STUART AERIALS**

‘All types supplied and installed’  
Tel. No. 880449

#### **B. J. CLEGG & SON**

‘Plumbing, heating and gas fittings’  
Tel. No. 880120

#### **PETER GARNETT**

‘For all your decorating needs’  
Tel. No. 881249

#### **BARRA BOARDING KENNELS**

Parkgate Road, Saughall  
Tel. No. 880837

#### **LITTLE CREEK DOG KENNELS**

Kingswood Lane, Saughall  
Tel. No. 880267

#### **EPTOWING**

Mobile Tow Bar Fitting Service  
Darlington Crescent, Saughall  
Tel. No. 881609

#### **DR. WILLIAM RICHARDSON**

Homeopathy  
Church Road, Saughall  
Tel. No. 880574

#### **CHESTER PAINT STRIPPERS**

Reclaimed doors & fire places for sale  
Sea Hill Farm, Saughall  
Tel. No. 881771

#### **PERFECTIONS UNISEX SALON**

2 Fiddlers Lane, Saughall  
Tel. No. 881122

#### **READES RESIDENTIAL**

‘Lettings and Property Management’  
[www.readesresidential.com](http://www.readesresidential.com)  
Tel. No. 08450 097 097

**If you would like your local business advertised in the next newsletter, please contact the Clerk.**

## ***WHO'S WHO on the Council***

### **Parish Councillors**

Ian Humphrey  
 Philamena Humphrey  
 Jean Johnson  
 Brian Kerr (Chairman)  
 Colin Moss  
 Rakesh Shukla  
 Andrew Storrar  
 Jeanne Storrar  
 Helen Thorniley-Jones  
 (Shotwick Park)  
 Andrew Warrington  
 Dolores Whitton JP  
 Mairi Wynne-Eyton  
 Charles Wynne-Eyton  
 (Shotwick Park)  
 Jenny Young (Vice-Chairman)

01244-880011 Jeanne Storrar 01244-880226  
 01244-880011 e-mail: j.storrar@chestercc.gov.uk  
 01244-880895 Andrew Storrar 01244-880226  
 01244-880347 e-mail: a.storrar@chestercc.gov.uk  
 01244-881422  
 01244-881765  
 01244-880226 David Rowlands, The Grange,  
 01244-880226 Warrington Road, Mickle Trafford,  
 01244-880205 Cheshire 01244-300655  
 e-mail: rowlandsd@cheshire.gov.uk  
 01244-880418  
 01244-881411  
 01352 700220  
 01352 700220  
 01244-881133

### **District Councillors**

### **County Councillor**

David Rowlands, The Grange,  
 Warrington Road, Mickle Trafford,  
 Cheshire 01244-300655  
 e-mail: rowlandsd@cheshire.gov.uk

### **Member of Parliament**

Mrs Christine Russell MP,  
 Constituency Office, York House,  
 York Street, Chester, CH1 3LR

### **Clerk to the Council**

Shirley Hudspeth  
 10 Merton Close  
 Little Neston  
 Cheshire  
 CH64 0TR  
 Tel: 0151 336 3367  
 e-mail: clerk@saughall.gov.uk

### **Local Police**

Blacon Police Station 01244-350222  
 (The number to ring when reporting a crime)

### **Homewatch**

Keith Stinson 01244-880607

## **USEFUL CONTACT NUMBERS**

### **Women's Institute**

Mrs Norah Murchie,  
 Tel: 880701

### **Saughall Gardening Club**

Miss Dorothy Carline,  
 Tel: 880658

### **The Ridings Infant School**

Headteacher – Mrs J Davies,  
 Tel: 881451

### **Saughall Cricket Club**

Mr Brian Huxley, Tel: 880753

### **Golden Link Club**

Miss Dorothy Carline,  
 Tel: 880658

### **All Saints Church**

Vicar: Rev Brian Harris  
 Tel: 880213

### **Saughall Table Tennis Club**

Mr Bob Salisbury, Tel: 881323

### **Thomas Wedge CE (Controlled) Junior School**

Headteacher – Mrs L Kwissa  
 Tel: 880473

Church Wardens  
 Mr Roger Leslie, Tel: 880597  
 Mrs Margaret Lundy,  
 Tel: 372038

### **Pre-School Group**

Mrs Pam Roberts, Tel: 880219

### **Saughall Friday Club**

Mr Keith Stinson, Tel: 880607

### **Methodist Church**

Rev Margaret Banks,  
 Tel: 674734