

PARISH NEWSLETTER

Issue No 55

www.saughall.gov.uk

March 2013



Council Tax 2013/14

The Parish Council has set its budget for the next financial year and kept the precept the same as for 2012/13 which means that the Council Tax will for the second year running be £54.98 per household per Band D property.

The Government has changed the way in which Council Tax is charged, effectively reducing the tax base. To offset this Cheshire West and Chester (CWaC) Council has provided a grant of £6,032, the amount equal to the tax base reduction for this Council.

The Parish Council has asked CWaC Council for a Parish Precept of £58,389 for 2013/14. The Parish Council's budget amounts to £76,906.

How your £76,906 is to be spent is set out in the Council's budget below.

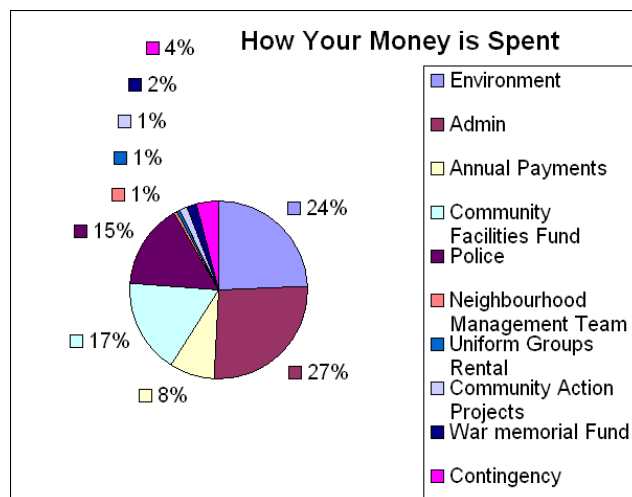
Council Budget 2013/14

| Budget Head | Allocation |
|--------------------------------------|---------------|
| Environment | 18,800 |
| Administration | 20,250 |
| Annual Payments | 6,213 |
| Community Facilities Fund | 13,343 |
| Police | 11,800 |
| Neighbourhood Management Team | 500 |
| Uniform Groups' HQ Rental | 500 |
| Community Action Projects | 1,000 |
| War Memorial Fund/New Roll of Honour | 1,500 |
| Contingency | 3,000 |
| Total | 76,906 |

This budget can be viewed in more detail online at: -

<http://www.saughall.gov.uk/Minutes.htm>

How your money is spent



Welcome to the New Councillor

Jane Edwards was elected to serve on the Parish Council following the By Election held on 21 February 2013. She has taken up the seat that became vacant as a result of the sad death of Ian Humphrey.

The Election results were as follows:

| | |
|------------------|-----|
| Jane Edwards | 265 |
| Anna May Manning | 52 |
| Hazel Nina Parry | 53 |

The Council looks forward to working with her over the forthcoming months.

Saughall Youth Club

The Youth Club is always looking for people to help run it. If you think you can help please contact the Clerk.



Music in the Park - Sunday, 26 May 2013, 3-8pm in the Golden Jubilee Park



Last May saw a huge number of people gather in the Golden Jubilee Park to enjoy an afternoon of music from local Bands.

Gazebos were erected, picnics unpacked and a Tea Stall, Beer Tent and Hot Dog Stall provided refreshments.

As a result of the very positive feedback following 2012's Music in the Park event, we have been encouraged to arrange a similar event again in 2013 to celebrate the 50th Anniversary of the Queen's Coronation

We are hoping to include even more local talent this year and would welcome interest from bands, singing groups, soloists and musicians.

As this is a free community event we are able to pay expenses only but we do offer the chance for artists to perform in front of an enthusiastic audience on what we hope will be another successful and fun-packed afternoon.

This is very much a family event and children's groups will be very welcome.

Performance slots are variable – one song only, if you wish.

Further details from and expressions of interest to:

Kath Evans Tel No: 880951 or email:

tomkatevans@btinternet.com

The Music in the Park Group

(in association with the Parish Council)

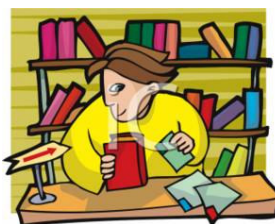
Feedback Please!

Please send us your suggestions and comments on anything relevant to the Parish Council. Contact Shirley Hudspeth, Clerk of the Parish Council on telephone number 0151 336 3367, or email clerk@saughall.gov.uk

Proposal for a Service Members' Club

Calling all Service and Ex Service personnel to muster and form up, where dependant on the interest generated an appropriate course of action can be taken.

Are you interested in forming a Saughall Club/Branch of Serving and Ex Military Service members? If so please contact Dean on Tel No: 07581 372066 or Email: dean@taylorshintl.com to register your interest and for further details.



Saughall Library Closure

Sadly the Library at the Vernon Institute is earmarked for closure on **26 March 2013**. The Parish Council would like to thank Mary Abrams, Pat Layton and Sheila Jones who have worked tirelessly on a voluntary basis to keep the Library going for so long.

Craft and Chat

The knit and Natter Group has been meeting at the Vernon Institute for 16 months. The Group began as just a few local women, but has gradually grown in numbers to approximately twenty who have benefited from the free use of the room, as it coincided with the opening hours of the village Library.



The Group would like to continue after the Library closes as its members value the friendship and support they have shared. They range from young mothers in their 20s and 30s, to more mature woman and they all enjoy the diversity and camaraderie of the Group.

In future the Group will continue to meet and will try to broaden its appeal by changing the focus from knitting and crotchet to include all aspects of craft work; thus, the Group has been renamed "Craft and Chat". The Group hopes that this will attract others from the village to join to pursue activities such as

needlework, card-making, quilting etc. and bring their skills to a wider audience, whilst enjoying the friendly chat that we all value so much.

There will be a small charge each week to enable the Group to pay for the room and the Parish Council has been asked to make a one off "start up" donation of around £50-£80 to enable it to guarantee the rent and enable it to become a regular meeting group at the Vernon Institute.

The Group, in its new format, will meet on Tuesday, 2 April. For more details please contact:

Sue Harris
Secretary, Saughall Craft and Chat
Tel No: 880122
Email: sue_at_ness_cottage@hotmail.com

Parish Council Twitter Trial

On 28 February 2013 [@SaughallPC](https://twitter.com/SaughallPC) had 49 followers and is following 55. Currently, [@SaughallPC](https://twitter.com/SaughallPC) has Tweeted 277 tweets, these have included information regarding: planned gritting operations across Chester, flood warnings, police bike marking sessions, severe weather warnings, school closures, events in Chester, Parish Council meetings, Saughall Gardening Club meeting dates, events taking place in the village and special offers at the Greyhound Inn.

We are very grateful to all of you that have followed [@SaughallPC](https://twitter.com/SaughallPC) and those that have supplied information about events in the village.

If you are not a Twitter user why not give it a try? Twitter has many useful information pages that will go through step by step how to use Twitter; some of these include set up, protecting your account and rules of using Twitter.

Twitter provides its users with almost instantaneous information regarding events happening around the world and it also provides a means of communication to people of interest to you.

Twitter has proved invaluable recently over an

issue in Fairholme Close in Saughall. Several residents raised a concern through Twitter and our MP, Stephen Mosley, who is a follower of [@SaughallPC](https://twitter.com/SaughallPC), picked it up and supported residents in trying to resolve the matter.

You can find [@SaughallPC](https://twitter.com/SaughallPC) easily by visiting our website and clicking on the Twitter link.

If you have any information that you would like [@SaughallPC](https://twitter.com/SaughallPC) to tweet e.g. an event, special offer or anything else you think the village would be interested in, please send a email to: Katherine.ford1@btinternet.com

Kathy Ford
Tel No: 881459

Connecting Cheshire – Superfast Broadband

Go online to register your need for superfast broadband and to monitor the progress of the campaign to bring it to the village.

The Superfast Campaign is online at –

http://www.connectingcheshire.org.uk/?page_id=56

Parish Planning – Does Saughall Matter?



Parish Plans are a Government-supported initiative which gives people living in villages a way of deciding how they would like their village to develop.

Our Parish Planning is community-led. The resulting new Plan will determine the future of our community and how it can change for the better. It will be a document that sets out a vision for the future of our parish over the next ten years or so and will outline how that can be achieved in an action plan.

The new Parish Plan will include a detailed description of the desires of the people of Saughall and Shotwick Park. However, it will not simply be a wish list. It will contain a detailed, prioritised action plan, setting out

what has to be done, by when and by whom, with examples of funding sources available to achieve these aspirations.

However, the Plan by itself will produce no consequences. Delivery of the Plan requires individuals to put effort into making things happen.

The Parish Plan refresh has begun under the leadership of Nigel Crossley. A village survey has already been carried out and the findings are being analysed.

Over the next few months we will be looking at the issues that affect our community. As we progress this work we will be considering:

Housing needs – which type of housing is needed?

School provision – is it adequate?

Traffic and Transport – how do we get around? How do we get to school, work and the shops? Where do we park?

Quality of Life – Are there sufficient recreational and leisure facilities in our area? Is there enough open green space for children to play on? What about allotment provision? Are cyclists and walkers happy?

Economic Development – Do we need some of this in our village?

Retail – How do we regenerate closed shops/business premises?

If you would like to be involved and help draw up the new Parish Plan please get in touch with the Clerk or any Parish Councillor.

Building an Extension to your Property has just become a whole lot easier!



New changes to planning regulations will allow most householders to build both up and out for the first time, within certain limits, without requiring specific planning permission. Along with doing away with local planning department form-filling and bureaucracy

comes the added bonus that homes with new extensions WON'T be charged additional council tax. The new rules attempt to strike a balance between allowing homeowners to make improvements and limiting the size of an extension so neighbours are protected. Larger more intrusive extensions will still require permission.

The regulations also aim to reduce the flood risks caused by surface water run off. Converting your front garden to a driveway or parking area over five square metres will not require planning permission as long it is constructed using surfaces that allow the water to soak through the ground. Surface water can be drained using permeable surfaces such as concrete block paving with gaps, porous asphalt or gravel, wheel track only paving or through installation of 'soak-away' systems.

A new planning portal website has been set up to help consumers understand the new planning requirements when making home improvements. The site includes an interactive diagram of a house. You simply click on the part of the house you are changing and the new planning rules are explained.

To find out more, go online to –

<http://www.planningportal.gov.uk>

For more information on the types of acceptable permeable surfaces for front gardens, go online to –

<http://www.planningportal.gov.uk/permission/commonprojects/patiosdriveways>

Interactive Map for our Area

A new interactive map is available on Cheshire West and Chester Council's website. It displays a large amount of information including planning applications, footpaths, gritted roads, school catchment areas, bus stops even every lamp-post. It's well worth a look. Go online to –

<http://maps.cheshire.gov.uk/CWAC/interactive/mapping/>

Lodge Lane Affordable Housing



Cheshire West and Chester Council has agreed to the Parish Council's request that the roads in the new housing development be called Thomas Wedge Road and Humphrey Close (in memory of Councillor Ian Humphrey who died last November).

Footway/Streetlights

If there are any footways or streetlights in the village which need attention please tell the Clerk, and we will report them and let CWaC Councillor Brian Crowe know the details.

Cheshire West and Chester (CWA) Local Plan

Putting in place a new Local Plan is a key priority for Cheshire West and Chester Council. An up-to-date, adopted Local Plan ensures that planning decisions best reflect locally determined priorities for new homes, jobs, the environment and infrastructure investment. The need to put in place a Local Plan without delay is also coming into sharp focus because of the anticipated revocation of the Regional Strategy for the North West. It is expected to be revoked in the near future which means that its development targets for Cheshire West and Chester urgently need to be replaced with new, locally determined ones that are tailored to meeting the needs of our communities across the borough. Coupled with this is the continued emphasis in national planning policy that planning decisions should be plan-led.

In the light of this, CWaC Council's Local Development Framework Panel approved a revised timetable for the preparation of the Local Plan on 28 January 2013, which is

summarised below:

| Stage | Date | Status |
|--|---|----------|
| Consultation on initial topic papers | 2009 | Complete |
| Issues and Options Consultation | November 2009 – January 2010 | Complete |
| Consultation on Development Options | March – June 2011 | Complete |
| Preferred Policy Directions Consultation | August – November 2012 | Complete |
| Draft Publication Plan Consultation | Summer 2013 (6 weeks during May and June, specific dates to be publicised in advance) | |
| Submission | Autumn 2013 | |
| Examination | Late 2013 – Early 2014 | |
| Adoption | Spring 2014 | |

Subject to decisions by Councillors; the next opportunity to comment on the Plan will be for six weeks during May and June this year. The specific dates are still to be agreed but will be publicised in advance.

For those of you who have been tracking and commenting on the proposal for Green Belt boundary change around Chester please note that there will be an opportunity for everyone to give their views on any site(s) proposed to be removed from the Green Belt as part of this next consultation. The content of the Plan on this matter is, however, still dependent on the outcome of work currently being carried out into the suitability of various site options. If a Green Belt boundary change is proposed, its inclusion within the full draft Plan has the advantage of giving everyone an opportunity to see how it fits into the proposed overall long-term planning strategy both for Chester and for the borough as a whole.

If you have any questions about the Plan, please don't hesitate to contact CWaC Council's Spatial Planning team on 01244 973887 or email

spatialplanning@cheshirewestandchester.gov.uk

Quality Parish Council Status



The Parish Council wants to apply for Quality Parish Council Status which it hopes will bring real benefits, not

only for itself, but also for the people who work with it and, more importantly, the community it serves.

In addition to being able to demonstrate to local communities that minimum standards have been met, Quality Councils are supposed to be in a better position to influence the decision making process and/or take on additional services and areas of responsibility from their principal local authorities.

We have been informed, however, that the Quality Parish Scheme is currently under review with a view to re-launching an updated standards scheme sometime in 2013.

When Does the Council Meet?



The Council is scheduled to meet next at **7pm on Monday, 8 April 2013 in the Vernon Institute on Church Road.**

The meeting after that is the **Annual Council Meeting** and it is scheduled for **7pm on Tuesday 14 May 2013 in the Vernon Institute.**

The **Parish Assembly** is scheduled for **7pm on Monday, 29 April 2013 also at the Vernon Institute.** The Parish Council would like to invite residents of Saughall and

Shotwick Park to this meeting where the Chairman will present her report on the work and activities of the Council during 2012/13. This is an open meeting providing you with the opportunity to speak out on any matters that are causing you concern and on issues you would like the Parish Council to address. Notices for all Council meetings are posted on the Council's notice boards and website. Agendas for meetings are always on deposit in the Co-op Store and posted on the Council's website (www.saughall.gov.uk). Any resident on the Electoral Roll of Saughall or Shotwick Park is more than welcome to attend all of these meetings.

Report Anti - Social Behaviour Now

If you are experiencing anti - social behaviour and you think that Cheshire West and Chester Council should help address it, or you would like a Community Safety Warden to contact you please ring **0300 123 7033**, Monday - Thursday 8:30am - 5:30pm, Friday, 8:30am - 5pm (excluding Public Holidays) or fill in the online reporting form at www.cheshirewestandchester.gov.uk



How to Contact Cheshire Police

Non-emergency calls **0845 4580000**

Only use 999 if....

- There is danger to life.
- Violence is used or threatened.
- A serious crime is in progress or likely to occur.
- A suspect is nearby.
- There is a road traffic collision involving personal injury or danger to others.
- A vulnerable person needs urgent assistance.

Dog Fouling Nuisance

The Council is receiving more and more complaints about the nuisance of dog fouling, particularly on Church Road. It wishes to confirm that it has a zero tolerance attitude towards these incidents and will not hesitate to take action against offending dog owners.



The Council appeals to residents to assist it in this matter, both by ensuring they pick up any mess left by dogs and/or acting as an observer and reporting to us any incident they see. The Council will seek assistance from Cheshire West and Chester Council in taking the necessary action against any dog owners who fail to clear up mess left by their animal.

You have been warned yet AGAIN!

Cheshire West and Chester Borough Council's Responsive Service Guarantee

Abandoned Vehicles – will be investigated by the end of the next working day.

Business Waste Compliance – will be investigated by the end of the next working day.

Racist or Abusive Graffiti – on relevant land will be removed or obliterated within 24 hours.

Fly Posting – will be investigated and removed from relevant land within 2 working days.

Fly Tipping – will be investigated by the end of the next working day and cleared within 2 working days following completion of the investigation.

Nuisance Vehicles – will be investigated within 2 working days.

Dead Animals – will be removed from relevant land within 24 hours.

Sharps/Drug Related Litter – will be removed from relevant land within 4 hours.

Dog Fouling – will be removed from relevant land within 24 hours.

Overflowing Bins – will be emptied by the end of the next working day.

Damaged Street Furniture – will be investigated by the end of the next working day. The Tel. No. to ring is **0300 123 7026**

Nuisance Telephone Calls



Here is some advice on how you can combat nuisance telephone calls.

When you answer your phone, just say 'hello', rather than giving your name or number to an unknown caller.

If it is a nuisance call, just put the telephone down immediately and say nothing.

Join the telephone preference service. This is a free service which will add your number to a list which is distributed to UK companies. They should then no longer call you with marketing calls. It will take up to three months for your details to filter through and should stop all calls from British companies but unfortunately will not halt calls from abroad. Call 0845 0700707 or register online at <http://www.tpsonline.org.uk>

Get a "Caller Display" telephone, it will show you the number calling on the display. You can enter the numbers of your friends and family into the memory so that you can identify who's calling you. Others will show as "withheld", "international" or "unknown", just ignore ones that you don't want to answer. Cold callers will stop pestering when calls are not answered.

Make a list of numbers which you don't recognise and report them to your phone company.

Under no circumstances give any cold caller bank account details or personal details of any kind. Your telephone company will have an advice line, for BT that number is on the front of the telephone directory.

Message from PCSO Wendy Leason



A recent incident has occurred where the bus stop on Church Road has been damaged and panels have been removed.

It has been brought to my attention that incidents of anti social behaviour (ASB) at the bus stop are going unreported to the Police.

It has also been highlighted that residents affected by incidents do not know who to report such incidents.

To report Incidents involving ASB, damage



and criminal activity please telephone 101 and in an Emergency 999.

To inform me of any other issues please leave me a message on 0845 458 6375 voicemail.

To report incidents of ASB to Cheshire West and Chester (CWaC) Council's Community Safety Wardens please telephone 0300 123 7033.

Please remember you do not have to suffer such incidents involving ASB so do not hesitate to contact me or CWaC so that the issues do not escalate and impact on your life.

PCSO Wendy Leason

Police Community Support Officers (PCSOs)

The Cheshire Constabulary has undertaken a major study to identify the way in which local communities and stakeholders view the work of PCSOs. The findings illustrated a remarkable agreement from across the force area on the difference that PCSOs have made to communities since their introduction ten years ago. The survey has confirmed that PCSOs provide an important and valued service in the local communities of Cheshire. This is a service which, even in these times of difficult choices, the public wish to protect.

The cost of supporting a PCSO during 2013/14 is still £11,800, unchanged from 2011/12. The Parish Council agreed that keeping the cost at this level represented excellent value and so it made budgetary provision for Saughall's PCSO for 2013/14.

Cycling in Chester



Chester is one of the chosen cities for the Cycling Demonstration Towns Project. Over £2m worth of investment is going into transforming the city into an area where cycling becomes a genuine option. Cyclechester website:

www.cyclechester.com

Chester Half Marathon – Sunday, 12 May 2013



The Chester Half Marathon, run in conjunction with the Countess of Chester Hospital, is a road race run on partially-closed roads. It starts at the Chester Racecourse and finishes outside the Town Hall and Cathedral, in the city centre. The route does take in Saughall so be aware that there will be delays in accessing and vacating the village for part of the morning.

The race was limited to 5,000 runners in 2013 so don't leave it too late to secure your place. For details please visit:

<http://www.coch.nhs.uk/fundraising/events/news-events-library/chester-half-marathon-2013.aspx>

Saughall Gardening Club



We made it through the snow for our AGM in January to hear about everything planned for 2013. We all agreed that we didn't need a speaker on drought resistant plants! You are very welcome to

join us – ring Gill, our secretary on 881059 if you'd like more details.

18 March
15 April
20 May

Quiz Night
Herbaceous Hall of Fame
Fantastic Foliage

Sandra Pearson

Email: sandra.pearson4@btinternet.com

News from the Vernon Institute (VI)



The Vernon Institute Development Team has been busy reviewing the plans for the development of the VI building and we will be sending out details in our March Newsletter. The latest sketches are available now to download on the V.I. website at: <http://www.vernoninstitute.org.uk>.

We also have a refurbishment of the small hall planned which should start in the next two months and will include features to make the small hall suitable for more bookings.

Talking of bookings we have the next V.I. Bingo evening planned for 7pm on Friday, 22 March and the great Royal Buckley Town band Concert at 7pm on Sunday, 7 April. We hope you can join us for one or both of these community events.

Thanks for your support.

Chris Harman,
Chair of the Vernon Institute Management Committee
Tel No: 07966 759100

Saughall Neighbourhood Management Team

We are looking for people to join the Team to help us make Saughall a better place for us all to live.

In the past the Team has fund raised to provide:

- Safe Slippers for the over 60s
- Four Fun Weeks for 7-11 year olds
- Climbing Wall
- Panna Football and Ramp Riders Event

The Team has held football coaching sessions and most recently provided an entertainer to help the Friday Club celebrate its 19th birthday.

If you are interested and can spare a few hours now and then for the benefit of others please contact Tony Summers on Tel No: 07707622062 or Jenny Young on Tel No: 881133 for more details.

Tony Summers, Co-ordinator,
Saughall Neighbourhood Management Team
232 Hermitage Road, Saughall
Tel No: 07707622062
Email: saughall.safety@tiscali.co.uk

Planning Matters

If you are concerned about a planning application that affects you, please remember that Cheshire West and Chester Borough Council does consult with the Parish Council, who is a statutory consultee, as part of its decision-making process. The Parish Council can send a representative to speak at Planning Board meetings.

In forming its views about planning matters, the Parish Council **ALWAYS** wants to know what villagers think, so please make sure you make your views known to us.

Twenty's Plenty for Us

The Department for Transport has issued new guidance to local authorities on setting local speed limits. This guidance incorporated recent changes that created more flexibility for local authorities to implement 20mph limits and zones.

Cheshire West and West Council's Highway Officers are currently assessing the situation and the Parish Council remains hopeful that Saughall will have a 20mph Twenty's Plenty zone on Church Road before too long.

Don't Park on Grass Verges

Why do motorists continue to park on grass verges? As a result of this selfish action some verges in the village have been totally destroyed and the spring bulbs may not come through.

Potholes

This is the time of year when our roads bear the brunt of the harsh winter weather and potholes start to appear. Please report all faults to Cheshire West and Chester Council on **0300 1237 036** or visit 'Report It' at www.cheshirewestandchester.gov.uk

Keep Saughall Tidy



Don't drop litter, put it in one of the many litter bins dotted around the village or take it home. Also, do not over load your bins. Make sure that the lid goes right down and that rubbish can not escape.

Please report any litter problem areas to the Streetscene Team at Cheshire West and Chester Council on **Tel No. 0300 123 8 123**.

Refuse Collection

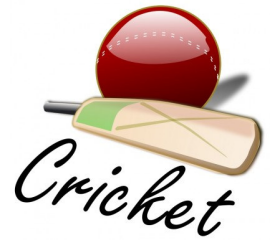
The Clerk wrote to Cheshire West and Chester (CWaC) Council's Senior Streetscene Manager after the February Council meeting to inform him of the Council's concerns that, following the bin collection on Monday mornings, the village is being left covered in litter and it was becoming a very serious problem. She asked him to arrange for more care to be taken so that litter did not escape and arrange for de-littering work to be carried out after the refuse is removed because the way the village was being left by CWaC's contractors was not acceptable.

On 26 February the Clerk was informed that the following areas had been manually cleansed:

- Long Lane from Fiddlers Lane to Parkgate Road.
- Lodge Lane from junction with Church Road up to the start of the private road.
- Parkgate Road from Long Lane to the roundabout next to the garage
- Seahill Road (60mph) its full extent from Sealand Road to Hermitage Road including the Flintshire County Council Section. There were some areas behind fence lines in private property which could not be reached.
- Hermitage Road from the junction with Church Road to Saughall Road.

Rural operatives and foreman have been asked to ensure that cleansing standards are maintained in the above areas relevant to CWaC.

Saughall Cricket Club



Saughall Cricket Club would like to hear from anyone aged 11 or over who would like to join our junior section and be coached by qualified coaches with a view to forming a junior team this season.

Senior players are very welcome as are any persons who would like to volunteer to help with the running of this very successful community based Club.

Please come and join us!

Brian Huxley
Tel No.: 880753 or
Email: behux@btinternet.com

Saughall All Saints Church



This month we gave a warm welcome to our Priest-in-Charge, Reverend Dave Nugent. What a marvellous congregation we had at Dave's induction service on 31 January. Dave's wife Jan is a school teacher in Liverpool. They have three daughters – daughter Abi (husband Jim), Beth and Jo, and a more recent acquisition (Duke) a 5 year old Golden Retriever. Dave is a Tranmere Rovers supporter (slipping a bit in the league now after a good start).

Dave and Jan will continue to live in Bebington until the vicarage situation is resolved. In the meantime, Dave will travel to Saughall. The Priest-in-Charge position is now part-time and Dave will be working approximately three and a half days plus Sunday each week.

In the picture below Rev. Dave is seen far right enjoying the superb meal at the Candlelit Supper at All Saints Church organised by Jacqueline Alley and her team. We would like to say a big thank you to them for all their hard work.



John Hallas and Brian Eyres
Church Wardens

Saughall Methodist Church

The congregation at Saughall Methodist Church has spent many years thinking about the future of our church and hall; then fund raising and planning. At long last, the project is now well under way. The existing church and hall have been demolished; and the single new building, which will provide space both for worship and for community activities, has now been erected by Prime Maintenance Ltd of Heswall. The interior is being fitted out, and we are still on track for the building being handed over to us in the middle of April.

A service to dedicate the new building will take place on the afternoon of 12th May at 4pm (the same day as the Chester Half-Marathon).



Look out for details of other special events as we welcome the community back into the new premises.

Rev J Neil Stacey
Superintendent Minister
Tel No: 675967
Email: neil@wesleychester.co.uk

Saughall Friday Club



The Saughall Friday Club likes to celebrate special occasions and seen here is one of our wonderful senior members delivering a special thank you to all the volunteers for providing another excellent meal.

The Saughall Friday Club, that meets on a Friday to provide a day of entertainment and good food for elderly local residents, is in great need of further volunteers. Club members are collected from their homes at approximately 10:40 am and returned at approximately 3:10 pm. Volunteers are needed to help with this transport. Help is also needed with cooking of the lunches. If you could spare some time to help occasionally, this would be very much appreciated. If you would like further details, please call Jeanne Storrar on 01244 880226, or you are most welcome to call in to see us at the Friday Club which at present meets in the Saughall Uniformed Groups' Headquarters on Fiddlers Lane.

Jeanne Storrar
Tel No: 880226

Saughall Uniform Groups' (SUGs) Headquarters - its other Life.

The SUGs' Headquarters stands quietly at the corner of the Golden Jubilee Park. It is the base for Saughall Uniform Groups, a Beaver Lodge, Rainbows, Brownies and Guides.

However when the Uniformed Groups are not meeting their Headquarters the building has another life. It is the base for Taekwon do, an Art Club, Zumba, Bums and Tums, Toddlers, Sugar Craft, Saughall Cricket Teams, Friday Club, Holiday Play Schemes, some Parish Council meetings, Parish Music Festivals, Children's Parties, CWaC's Area Committee meetings, occasional rehearsal space for dancers and Community Police events.

Phew! This building is a busy space **BUT** if you are looking for somewhere to use as a base for say Rambling, Running, Netball, Archery and Craft Clubs and Children's Parties please contact Jenny Young on Tel No: 881133 or Joanna Brookes on Tel No: 881284.

Joanne Brookes

Email: brookesjoanna@btinternet.com

Saughall Uniformed Groups

Beavers – Mondays, 5– 6pm
Age: 6 – 8
Tel: 881348



Rainbows – Thursdays, 5:30 – 6:30pm
Age: 5 – 7
Tel: 372637

Brownies – Tuesdays, 6 – 7:15pm
Age: 7 – 10
Tel: 881284

Guides – Tuesdays, 7:30 – 9pm
Age: 10 - !!!
Tel: 881133

To hire the Scout Hut Tel: 881284 or 881133.

Can you spare some time to help with these Groups please? A CRB check is not required for occasional helpers.

Jenny Young
Tel No: 881133

Saughall Women's Institute



Saughall WI meets on the first Tuesday of the month at 7:30pm. The meeting on 5 March will feature a presentation on Great Days Out. On 2 April the entertainment will be provided by members. On 7 May the meeting will include a talk on the Mystery Plays. Members can also join in with other activities such as crafts, walks, darts, theatre trips and coach outings. New members and visitors are always welcome.

Lesley Hardy

Email: colinhardyuk@btinternet.com

Saughall WI continues its very successful and interesting meetings on the first Tuesday of the month. In January the club celebrated the



90th Anniversary of the foundation of the Saughall WI with a 1920's party and members dressed in 1920's outfits to mark the occasion. President Mary Evans is pictured with Nora Murchie who

cut the magnificent Birthday cake made by Norma Marchant and decorated by Georgie Dique. Everyone had a most enjoyable evening.





A very successful coffee morning in aid of the Hospice of the Good Shepherd was held in the Vernon Institute with lots of stalls and an excellent cake stall, all arranged by Mary Evans and friends from the Saughall WI and Saughall Gardening Club. We would like to say a big thank you to everyone who helped to raise the sum of £400 which has been delivered to the Hospice for which they are very grateful.

Jeanne Storrar
Tel No: 880226

Parish Council Surgeries

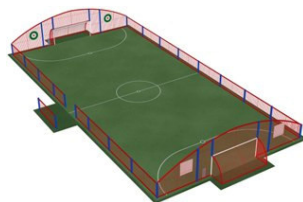
The Council holds successful monthly surgeries on Saturday mornings outside the Co-op Store and at the Farmers' Market in the Vernon Institute. It has now decided to hold surgeries on other days and in various venues around the village as well.



Notices will be posted on village notice boards, well in advance, to inform where and when forthcoming Surgeries are to be held.

Multi Use Games Unit - MUGA

The developmental benefits and outcomes, as well as fun, that a Multi-Use Games Area (MUGA) concept can offer communities encompass the very essence of multi-use and community cohesion. Users can play with their kids, play on their own or use the facility for training



exercises to increase the skills levels of local sports teams.

The Council held a drop in session on the evening of Friday, 1 March 2013 at the Vernon Institute to view plans for a new MUGA to be located in the Golden Jubilee Park.

The proposal is to extend the current hard surface with goal/basketball end to a size of 37 x 18.5m (fenced). There may also be a option to install lighting around the MUGA.

This initiative is reliant on the Parish Council being able to attract grant aid.

If you have any comments or questions on this proposal please contact Councillor Kathy Ford on katherine.ford1@btinternet.com

Activities at the Vernon Institute

A variety of activities take place at the Vernon Institute. Please see the notice board in the entrance hall for exact times and contact numbers. Activities include:

- Pilates
- Badminton
- Table Tennis
- Snooker/Billiards
- Women's Institute
- Art Club on Tuesdays, limited numbers, telephone 880733
- Craft and Chat on Tuesdays, 2:30 – 4pm in the small hall
- Gardening Club
- Golden Link
- Play School
- Whist
- Art Club
- Dancing Schools
- Slimming World
- Farmers' Market – All local produce, Every Saturday 9am – 12pm in the Small Hall.

Activities at All Saints Church

- Senior Monday Meeting
- Children's Group Meetings and Activities
- Praise and Play

Activities at the Methodist Church

The following activities are provided in the Methodist Hall. The Bookings Secretary is June Downes who can let you have further details (Tel: 880181).

- Mother and Toddlers Group
- Chester Dance Academy
- Friday Club
- The Art Class with John Paskin
- Mollington Singers Choir
- Coffee Morning, once a fortnight

Mollington Singers Summer Concert

Wednesday, 26 June 2013 at 7pm
at The Vernon Institute - Tickets are £6 and refreshments are included.



Telephone Joan on 881031 or
Diana on 880224

The Beauty Lodge



Spring is around the corner and once again you can prepare for holidays and special occasions..... Jane continues to offer the following treatments for the 3rd year running at these amazing prices.....

PEDICURE....£20
BACK MASSAGE....£20
HOPI EARCANDLES...£25
FACIALS...from £30
HOLIDAY WAX package...from £25
EYELASH EXTENSIONS....£45
GLITTER TWINKLE TOES....£20

For the full list look on the website:
<http://www.thebeautylodge.com> or face book page.

GIFT VOUCHERS for Mothers Day and all SPECIAL OCCASSIONS can be posted and switch facilities for your telephone orders are available

RING Jane on.....01244 881111

TABLE TOP SALE INCLUDING BYGONES AND COLLECTABLES

SUNDAY 24TH MARCH 2013
10.30-2.00 P.M.

IN THE VERNON INSTITUTE
(SMALL HALL)
SAUGHALL

BART-ART 2013



EXHIBITION OF ART
By Local Artists

@ ST. BARTHOLOMEW'S
CHURCH, SEALAND

(OLD SEALAND ROAD)

4 MILES OUTSIDE CHESTER ON A548
(TURN OFF SEALAND ROAD AT TRAFFIC LIGHTS
TO SAUGHALL)

ADMISSION FREE
20TH JUNE TO 23RD JUNE

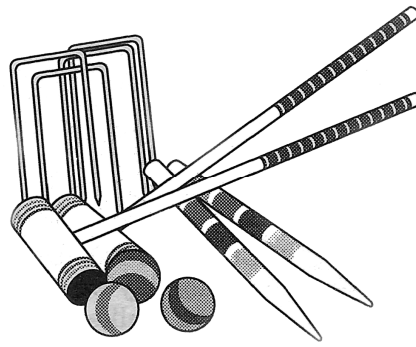
12 NOON TO 8.00 P.M. DAILY
(SERVICE OF CELEBRATION & THANKSGIVING ON SUNDAY @ 6.00 P.M.)

REFRESHMENTS AVAILABLE

PLEASE VISIT OUR LOVELY CHURCH
WHERE YOU WILL FIND A WARM WELCOME

(ENTRIES INVITED-CLOSING DATE 17TH MAY 2013)

CONTACT TEL. NO. 01244 881393
OR 880226
OR 880733



CHESTER CROQUET CLUB

Summer's coming, make the most of it!

We welcome new members and learners

After a long, wet summer and autumn last year and a dreary winter, everyone must be looking forward to warmer days and longer evenings. Now is the time to plan ahead. Why not try your hand at croquet? Perhaps you have played garden croquet with family or friends and would like to learn more about the game. Perhaps you have hung up your boots after playing a more strenuous sport and would like to switch to a game that involves challenge and skill but does not require the strength and stamina of more energetic activities. Perhaps the children have left home and you find you have more time for a new outdoor leisure activity. Perhaps you have just retired and would like to try something new. With its handicapping system, croquet is a game that can be played and enjoyed on equal terms by men and women of all ages and abilities.

Chester Croquet Club meets in Westminster Park off Hough Green in Chester. It is a friendly and successful club with about a hundred members and is always pleased to welcome new members of all standards from absolute beginners to more experienced players.

The next beginners' course will be held on Thursday evenings from 6.30 to 8.30 pm for six weeks from 2 May to 6 June 2013. The fee for the course is £30 but is free for new members joining the club at a full subscription of £52. Coaching is also available for people who have played before and would like to improve their skills.

No previous knowledge of the game is needed and all equipment will be provided by the club. The only requirement is that players must wear flat-soled shoes.

If you would like to enroll or would like more information, please contact the course coach, Janet Davies, on 01244 350370.

Come and join in and make the most of the summer

USEFUL CONTACT NUMBERS

Women's Institute
Mrs Mary Evans,
Tel: 880177

Saughall Gardening Club
Gill Whittaker
Tel: 881059

All Saints Church
Church Wardens
John Hallas Tel: 881317
Brian Eyres Tel: 880416

Saughall Cricket Club
Mr Brian Huxley, Tel: 880753

Saughall Colts Junior Football
Club

Football for children aged 6-
16

Mr Steve Richards 881896
www.saughallcolts.co.uk

Pre-School Group
Mrs Lynda Johnson, Tel:
880954 (Term time only)

Saughall Table Tennis Club
Mr Bob Salisbury, Tel: 881323
email:
rm.salisbury@btopenworld.com

Saughall Neighbourhood
Management Team
Co-ordinator
Tony Summers
0770 762 2062

Saughall Friday Club (Day
Centre)
Tel: Jeanne on 880226 or
07764 608680

Golden Link Club
Margaret Grain,
Tel: 881294

All Saints Primary School
Headteacher – Donna
Prenton
Tel: 981090

VI Badminton
Chris Harman Tel: 880205
email: chrisjharman@aol.com

Uniform Groups and Scout Hut
Bookings
Phil Brooks
Tel: 881284

VI Management Committee
Chris Harman Tel: 880205
email: chrisjharman@aol.com

Saughall Taekwon-do
Monday evenings at the
Uniformed Groups'
Headquarters on Fiddlers Lane,
Saughall (CH1 6DH).

Call 07711 106566 or
Email:

instructor@saughallblades.com

Web:

<http://www.saughallblades.com>

Facebook:

www.facebook.com/SaughallBlades

WHO'S WHO on the Council

| Parish Councillors | | |
|---|---|---|
| Jane Edwards 16 The Close Saughall Chester CH1 6BD 0780 781 6444 | Kathy Ford 6 Vernon Close Saughall Chester CH1 6BH 01244 881459 katherine.ford1@btinternet.com | Dennis Holman 28 The Ridings Saughall Chester CH1 6AX 01244 881593 d.holman@chester.ac.uk |
| Howard Jennings Copperfield Church Road Saughall Chester CH1 6EN Howard.Jennings@collegeoflawalum ni.co.uk | Jean Johnson Oak Tree Nurseries Fiddlers Lane Saughall Chester CH1 6DH 01244 880895 a.johnson426@btinternet.com | Brian Kerr OBE 33 Greenway Saughall Chester CH1 6EG 01244 880347 brian543kerr@btinternet.com |
| Janette Knox 7 Rosewood Grove Saughall Chester CH1 6AN 01244 881259 janknox51@gmail.com | Rakesh Shukla 30 Church Road Saughall Chester CH1 6EP 01244 881765 rakesh@saughallpharmacy.co.uk | Andrew Storrar Hey House Farm Fiddlers Lane Saughall Chester CH1 6DH 01244 880226 andrewstorrar@hotmail.co.uk |
| Jeanne Storrar Hey House Farm Fiddlers Lane Saughall Chester CH1 6DH 01244 880226 jeannestorrar@hotmail.co.uk | Andrew Warrington 6 Worsley Avenue Saughall Chester CH1 6BG 01244 880418 andrewwarrington@hotmail.co.uk | Dolores Whitton JP 2 Darlington Crescent Saughall Chester CH1 6DB 01244 881411 dandpcwhitton@talktalk.net |
| Jenny Young – Chairman 212 Hermitage Road Saughall Chester CH1 6AE 01244 881133 chairman@saughall.gov.uk | Peter Young 62 Hermitage Road Saughall Chester CH1 6AQ 01244 880685 pete4848young@yahoo.co.uk | Clerk to the Council Shirley Hudspeth 10 Merton Close Little Neston Cheshire CH64 0TR 0151 336 3367 clerk@saughall.gov.uk |
| Cheshire West and Chester Councillor | Member of Parliament | Local Police |
| Brian Crowe Glebe Farm Coalpit Lane Mollington Chester CH1 6JL 01244 851384 brian.crowe@ cheshirewestandchester.gov.uk | Stephen Mosley MP Unionist Buildings Nicholas Street Chester. CH1 2NX Tel 01244 458120 Email: Stephen@chestermpp.com Website: www.chestermpp.com | Blacon Police Station, Blacon Avenue, Chester, CH1 5BD 01244 350222 (The number to ring when reporting a crime) Saughall's PCSO is Wendy Leason Wendy.leason@cheshire.pnn.police.Uk Voicemail 0845 458 6375 to leave a message 0845 4580000 (switchboard) |

If you would like to advertise your business in our next newsletter or you represent a local non profit making group in the parish and would like to promote your group, please contact the Clerk.

SUPPORTING OUR LOCAL BUSINESSES

'USE THEM OR LOSE THEM!'

CO-OPERATIVE STORE

Church Road, Saughall.
'Everything you need from your local friendly village shop'
Tel. No. 881408

SAUGHALL SERVICE STATION

Church Road, Saughall
'For all your motoring needs'
Tel. No. 881625

CHESTNUT HOUSE DAY NURSERY

Church Road, Saughall
'Quality care for Children'
Tel. No. 880371

BARRA BOARDING KENNELS

Parkgate Road, Saughall
Tel. No. 880837

LITTLE CREEK DOG KENNELS

Kingswood Lane, Saughall
Tel. No. 880267

FAR EAST

CHINESE TAKE-AWAY

Fiddlers Lane, Saughall
Tel. No. 881621

BELL STONE MASONRY

8 Eastfields, Saughall
Tel. No. 657925
www.bsmasonry.co.uk
email:
leebellstonemasonry@hotmail.co.uk

SAUGHALL POST OFFICE

Within the Co-operative Stores,
Tel No. 880403

P DAVIES

Qualified Tradesman
Painting & Decorating
Property Maintenance
(Private & Domestic)
Tel. No. 880564
Mobile No. 07708330058

B. J. CLEGG & SON

'Plumbing, heating and gas fittings'
Tel. No. 880120

OAKTREE NURSERIES

Fiddlers Lane, Saughall
'Come along and see us – you won't be disappointed'
Tel. No. 880895

CREATIVE PHOTOGRAPHY

'Wedding and Social'
Maurice Alley, Church Road, Saughall
Tel. No. 880606

W. GATER, PLUMBER

'Plumbing and Heating Engineers'
Tel. No. 880654

DR. WILLIAM RICHARDSON

Homeopathy
Church Road, Saughall
Tel. No. 880574

CHESTER SECURITY SYSTEMS

32, Church Road, Saughall
'Our business is your peace of mind'
Tel. No. 881399
Email info@chestersecurity.co.uk

SUPERIOR DRY CLEANERS

In your area every week providing the following:

- Dry Cleaning Service
 - Ironing Service
 - Alterations and new zips
 - Carpet, rug and upholstery cleaning
- Tel. Rob Parry on 07788 157431

NEIL RICHARDS – ELECTRICAL CONTRACTOR

All types of electrical work undertaken
Tel. No. 881732
Email: nsrichards@yahoo.co.uk
Mobile No. 07981051992

SAUGHALL ROOF CARE

9 Saughall Hey
All roof work carried out
Tel. No. 880756
Mobile No. 07871966000

CHESTER PAINT STRIPPERS

Reclaimed doors & fire places for sale
Sea Hill Farm, Saughall
Tel. No. 881771

READES RESIDENTIAL

'Lettings and Property Management'
www.readesresidential.com
Tel. No. 08450 097 097

SAUGHALL VILLAGE SURGERY

Church Road, Saughall
Tel. No. 881590

WHEATSHEAF INN

Parkgate Road, Saughall
Tel. No. 851804

EGERTON ARMS INN

Hermitage Road, Saughall
Tel. No. 881369

GREYHOUND INN

Seahill Road, Saughall
Tel. No. 881122
www.thegreyhoundinnsaughall.co.uk

JS MORTGAGES

11 Hermitage Road, Saughall
Tel. No. 881848
Email: jaqirsingh@btinternet.com

SAUGHALL PHARMACY

30 Church Road, Saughall
'Your very own friendly dispensing chemist'
Tel. No. 881765

GOBLIN GARDENING

43 Rakeway, Saughall
Tel. No. 657967
Email: goblingarden@btinternet.com

PH LEWIS – JOINER

All types of work undertaken –
Windows, doors, floors, etc
Tel. No. 0789 424 0289

CELIA'S FLOWERS (LOCAL FLORIST)

Weddings, Funerals, Gift Bouquets etc.

City & Guilds Floristry

Tel. No. 01244 377160

Email: cgifford14@tiscali.co.uk

DJ GARDENING SERVICES

Grass Cutting/Hedge Cutting

Tree Surgery/Pruning

Gravel Work/Paving/Turfing

Driveway/Cleaning

OAP Discount Rates

Domestic/Commercial

Fully Insured

Free Estimates

Tel. No 01244 880802

07800944754

Email: daveyedwards71@hotmail.co.uk

BESPOKE BRIDES

Designer wedding gowns and
bridesmaid dresses to suit all budgets

Mollgrange Buildings

Mollington Grange

Mollington

CH1 6NP

Tel: 888311

Web: www.Bespokebrides.co.uk

YVONNE MCSHERRY**REIKE MASTER TEACHER**

Email: VonnieMcS@aol.com

Tel: 01244 881691

Mob: 07986 21 2128

Web: www.reikipower.co.uk

**CARAVAN CLUB CERTIFICATED
LOCATION**

5 Vans, Electric Points Available

Open All Year Round

Mill Cottage North, Parkgate Road

Tel: 01244 881284

Mob: 07715553743

RON STUART AERIALS

'All types supplied and installed'

Tel. No. 880352

WENDY REES REFLEXOLOGY

A Deeply Relaxing Experience

Rosewood Grove, Saughall

Mob: 0773 283 0264

Tel: 01244 880 689

www.foot2soul.co.uk

Please feel free to contact me if you

**Explore
Learning**

Explore Learning is a network of
Ofsted registered tuition centres for 5-
14 year olds, where inspiring tutors
work with children on Maths and
English courses that are created to
meet and adjust to the individual
needs of every child. As our courses
are also mapped to the National
Curriculum, Explore Learning
complements and supports your child's
work at school.

We offer all families a FREE INITIAL
CONSULTATION at our education
centre located inside Sainsbury's,
Great Boughton. During this session,
one of our inspiring tutors will work
with your child and demonstrate how
exciting maths and English can be.
They will then take the time to discuss
your child's individual needs with you
and explain how Explore Learning can
unlock their potential.

To book your free trial session, or for
more information, please call us on
01244 343433 or visit our website at
www.explorelearning.co.uk/chester.

**CLEAN AND DRY CLEANING
SERVICES**

Carpets, rugs, scotch guarding and
upholstery spring clean deeps, one off
cleans, supplies cheap bulk cleaning
products

Call: Wyn on Mob 07590698085

**BELLIS
HOME, GARDEN AND TREE
SERVICES**

Local Family Business

NPTC & N.Cert. Hort & RHS Qualified

Fully Insured

Friendly & Reliable

www.bellischester.co.uk

07912 299795/01244 289990

please call for a no obligation quote

A & G PLASTERING

Quality work guaranteed. For a free no
obligation quote phone Gordon on:
Tel. No. 880765 or Mobile: 0791 773
4376

FIX & REPAIR

We don't seem to repair things
anymore. For example:
wood rot or wear e.g. doors, staircases
conservatories where the upper
construction is good
metric replacements that won't fit e.g.
locks, door & furniture
machines, stoves and Agas where there
are no new part
Fix and Repair considers a cost
effective solution to these types of
problem:
hidden brackets to repair stairs &
banisters
new wood inserted, part replacement
with brickwork
original fittings can be repaired
heavy stoves and machinery repaired in
situ

Fix and Repair can also fix:-

- New shelves • doors • locks • plumbing
(e.g. a downstairs WC) • kitchens • brick
fireplaces • wood-burning stoves • flat
pack furniture assembled/modified (e.g.
extra doors/shelves can be fitted).

Copperfield, Church Road, Saughall.
Call Howard on Mobile: 07949 377943

SJR HEALTH AND FITNESS

Based in Saughall

Ladies Bootcamps

Personal Training on a one to one basis

Sue Richards

Tel: 07789072109

email: sjrfitness@yahoo.co.uk

would like more information about how Reflexology or Vertical Reflexology may benefit you.

Would You Stand for V.R.T?

Vertical Reflexology has won award for 'an Outstanding Contribution to Complementary Medicine' and in a medically approved trial in Bristol, over 60% of mobility problems showed an



improvement with VRT in 6 weeks.

NOEL BAKER BRITISH MEATS

Carl Anderson
2 Carlton Precinct
Western Avenue
Blacon
Chester
CH1 5PN
Tel: 372572
Email:

nbakerbritishmeats@yahoo.co.uk

LIMELOCKS

Locksmiths & Security Systems
Paul Bowdler
Tel: 0800 7999 247
Mob: 07588 999 247
Web: www.limelocks.co.uk
Email: info@limelocks.co.uk

What is Vertical Reflexology? Vertical Reflexology (VRT) is a powerful, specialist reflexology technique developed in the UK by Lynne Booth. During a treatment, pressure is applied to the feet whilst a person stands for several minutes, or to the hands whilst sitting. VRT may be a 'stand alone' treatment, or may be an addition to a longer (45 minute) reflexology treatment, to encourage deep relaxation with a release of tension and stress. Reflexologists suggest that reflexes in the hands and feet can be triggered to send a message to a certain area of the body, to help promote healing. Nerves in the hands and feet are sensitive when they are pressured and a response sent along these weight bearing nerves may be more powerful. VRT may help a person towards a feeling of wellness more quickly than conventional Reflexology, due to this effect.

Learn more about Vertical Reflexology from Wendy Rees Reflexology, Saughall www.foot2soul.co.uk.



Devalec is an electrical company specialising in Fixed Wire Testing, Portable Appliance Testing, and Electrical installations for the domestic and commercial sector
Your local electrician - Paul Sims



66 Church Road, Saughall, Chester, CH16EP
Tel: 01244 881033
Mob: 07990 548190
Web: www.devalec.co.uk
Email: info@devalec.co.uk

UTILITY WAREHOUSE DISCOUNT CLUB

Want to save money?

Join the Club!

Save money or get back 'Double the Difference' Save on phones, broadband & energy!

- Which? Recommended Provider for Broadband & Home Phone Services
- UK's cheapest online shopping
- Up to £200 to help you switch
- Cashback on shopping & petrol
- Award-winning customer service
- One simple bill for all your utilities

To start saving, contact:
Rachel Lowe on 01244 881181
utilitywarehouse.org.uk/rachellowe

THE BEAUTY LODGE

Newcroft
90 Church Road
Saughall
CH16EW
Tel. No. 01244 881111

JWCOMPUTING

Rakeway, Saughall
"A friendly, professional and affordable computer service engineer."
Web: www.jwcomputing.co.uk
Email: jwhitt@jwcomputing.co.uk
Tel: 07545 576602

FRENCH CLASSES

at Mollington Village Hall
Starting late September
Different levels from 1 to 6
Please contact :
Corinne : 01244 678467
www.tourschester.co.uk

There is still empty space available! If you would like your local business advertised in the next newsletter, please contact the Clerk.